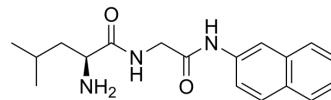


H-Leu-Gly-βNA

Cat. No.:	HY-P4378
CAS No.:	100930-00-5
Molecular Formula:	C ₁₈ H ₂₃ N ₃ O ₂
Molecular Weight:	313.39
Sequence:	H-Leu-Gly-βNA
Sequence Shortening:	LG-{\betaNA}
Target:	Others
Pathway:	Others
Storage:	Please store the product under the recommended conditions in the Certificate of Analysis.



BIOLOGICAL ACTIVITY

Description	H-Leu-Gly-βNA can be used as a substrate to detect the presence or absence of N-acetyl-BD-galactosaminidase ^[1] .
-------------	--

REFERENCES

[1]. David H. Pincus, et al. Rapid identification of yeast and other fungal microorganisms by enzyme detection. US4874695A.

Caution: Product has not been fully validated for medical applications. For research use only.

Tel: 609-228-6898

Fax: 609-228-5909

E-mail: tech@MedChemExpress.com

Address: 1 Deer Park Dr, Suite Q, Monmouth Junction, NJ 08852, USA