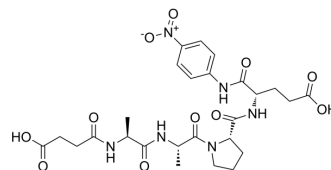


Suc-AAPE-pNA

Cat. No.:	HY-P4482
CAS No.:	108929-37-9
Molecular Formula:	C ₂₆ H ₃₄ N ₆ O ₁₁
Molecular Weight:	606.58
Sequence:	{Suc-Ala}-Ala-Pro-{Glu-pNA}
Sequence Shortening:	{Suc-Ala}-AP-{Glu-pNA}
Target:	Bacterial
Pathway:	Anti-infection
Storage:	Please store the product under the recommended conditions in the Certificate of Analysis.



BIOLOGICAL ACTIVITY

Description	Suc-AAPE-pNA is a chromogenic substrate of glutamyl endopeptidase. Suc-AAPE-pNA can be used to test glutamyl endopeptidase activity ^[1] .
-------------	------------------------------------------------------------------------------------------------------------------------------------------------------

REFERENCES

[1]. DeSantis G, et, al. Toward tailoring the specificity of the S1 pocket of subtilisin B. lentus: chemical modification of mutant enzymes as a strategy for removing specificity limitations. *Biochemistry*. 1999 Oct 5;38(40):13391-7.

Caution: Product has not been fully validated for medical applications. For research use only.

Tel: 609-228-6898

Fax: 609-228-5909

E-mail: tech@MedChemExpress.com

Address: 1 Deer Park Dr, Suite Q, Monmouth Junction, NJ 08852, USA