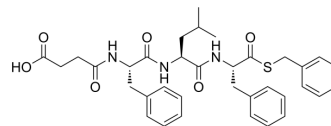


## Suc-Phe-Leu-Phe-SBzl

Cat. No.:	HY-P4492
CAS No.:	80651-94-1
Molecular Formula:	C <sub>35</sub> H <sub>41</sub> N <sub>3</sub> O <sub>6</sub> S
Molecular Weight:	631.78
Sequence:	{Suc}-Phe-Leu-Phe-{SBzl}
Sequence Shortening:	{Suc}-FLF-{SBzl}
Target:	Others
Pathway:	Others
Storage:	Please store the product under the recommended conditions in the Certificate of Analysis.



### BIOLOGICAL ACTIVITY

Description	Suc-Phe-Leu-Phe-SBzl is a substrate of ATP-dependent protease <sup>[1][2]</sup> .
-------------	---

### REFERENCES

[1]. Rotanova TV, et al. Classification of ATP-dependent proteases Lon and comparison of the active sites of their proteolytic domains. Eur J Biochem. 2004 Dec;271(23-24):4865-71.

[2]. Mel'nikov EE, et al. Suc-Phe-Leu-Phe-SBzl--nový substrat dlia issledovaniia funktsionirovaniia ATP-zavisimõj Lon-proteinazy Escherichia coli i ee modifitsirovannykh form [Suc-Phe-Leu-Phe-SBzl--a new substrate for functional study of Escherichia coli ATP-dependent Lon-proteinase and its modified forms]. Bioorg Khim. 1998 Aug;24(8):638-40.

**Caution: Product has not been fully validated for medical applications. For research use only.**

Tel: 609-228-6898

Fax: 609-228-5909

E-mail: tech@MedChemExpress.com

Address: 1 Deer Park Dr, Suite Q, Monmouth Junction, NJ 08852, USA