

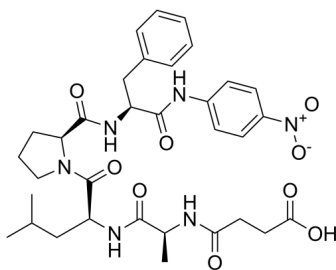
Suc-Ala-Leu-Pro-Phe-pNA

Cat. No.: HY-P4581
Batch No.: 275271
CAS No.: 128802-78-8
Molecular Formula: C₃₃H₄₂N₆O₉

ANALYTICAL DATA

Theoretical: C(-), H(-), N(-), Peptide Content(≥60.0%)
Result: C(57.52%), H(6.42%), N(12.05%), Peptide Content(95.60%)

Chemical Structure:



Caution: Product has not been fully validated for medical applications. For research use only.

Tel: 609-228-6898

Fax: 609-228-5909

E-mail: tech@MedChemExpress.com

Address: 1 Deer Park Dr, Suite Q, Monmouth Junction, NJ 08852, USA