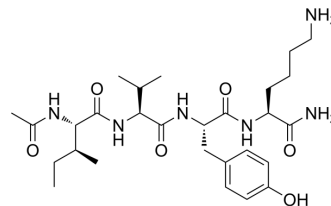


Acetyl-PHF4 amide

Cat. No.:	HY-P4819
CAS No.:	2022956-50-7
Molecular Formula:	C ₂₈ H ₄₆ N ₆ O ₆
Molecular Weight:	562.7
Sequence:	Ac-Ile-Val-Tyr-Lys-NH ₂
Sequence Shortening:	Ac-IVYK-NH ₂
Target:	Others
Pathway:	Others
Storage:	Please store the product under the recommended conditions in the Certificate of Analysis.



BIOLOGICAL ACTIVITY

Description

Acetyl-PHF4 amide is a polypeptide that can be found by peptide screening. Peptide screening is a research tool that pools active peptides primarily by immunoassay. Peptide screening can be used for protein interaction, functional analysis, epitope screening, especially in the field of agent research and development^[1].

REFERENCES

[1]. Birnbaum S, et al. Peptide screening. *Current Opinion in Biotechnology*, 1992, 3(1): 49-54.

Caution: Product has not been fully validated for medical applications. For research use only.

Tel: 609-228-6898

Fax: 609-228-5909

E-mail: tech@MedChemExpress.com

Address: 1 Deer Park Dr, Suite Q, Monmouth Junction, NJ 08852, USA