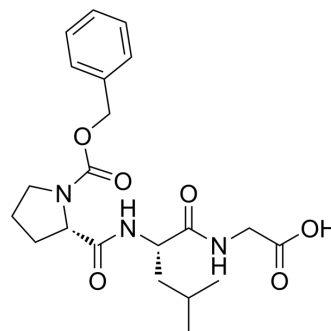


Cbz-Pro-Leu-Gly-OH

Cat. No.:	HY-P5040
CAS No.:	7801-38-9
Molecular Formula:	C ₂₁ H ₂₉ N ₃ O ₆
Molecular Weight:	419.47
Sequence:	{Cbz-Pro}-Leu-Gly
Sequence Shortening:	{Cbz-Pro}-LG
Target:	Others
Pathway:	Others
Storage:	Please store the product under the recommended conditions in the Certificate of Analysis.



BIOLOGICAL ACTIVITY

Description

Cbz-Pro-Leu-Gly-OH is a tripeptide that can be used in Parkinson's disease research^[1].

REFERENCES

[1]. Case TC, et al. Active and inactive L-prolyl-L-leucyl glycylglycinamide synthetic analogs in rat models of levodopa-treated Parkinson's disease. Life Sci. 1985 Jul 1;36(26):2531-7.

Caution: Product has not been fully validated for medical applications. For research use only.

Tel: 609-228-6898

Fax: 609-228-5909

E-mail: tech@MedChemExpress.com

Address: 1 Deer Park Dr, Suite Q, Monmouth Junction, NJ 08852, USA