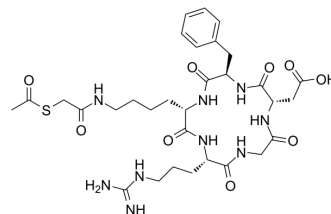


## cRGDfK-thioacetyl ester

Cat. No.:	HY-P5287
CAS No.:	393781-65-2
Molecular Formula:	C <sub>31</sub> H <sub>45</sub> N <sub>9</sub> O <sub>9</sub> S
Molecular Weight:	719.81
Sequence:	Cyclo(Arg-Gly-Asp-{d-Phe}-Lys)-{Ac-SCH <sub>2</sub> CO}
Sequence Shortening:	Cyclo(RGD-{d-Phe}-K)-{Ac-SCH <sub>2</sub> CO}
Target:	Integrin
Pathway:	Cytoskeleton
Storage:	Please store the product under the recommended conditions in the Certificate of Analysis.



### BIOLOGICAL ACTIVITY

#### Description

cRGDfK-thioacetyl ester is a bioactive polypeptide molecule. cRGDfK peptide has a selective affinity for integrins. cRGDfK peptide can modify NIR fluorescent probes for cancer targeting imaging<sup>[1][2]</sup>.

### REFERENCES

[1]. Toti US, et al. Interfacial activity assisted surface functionalization: a novel approach to incorporate maleimide functional groups and cRGD peptide on polymeric nanoparticles for targeted drug delivery. *Mol Pharm.* 2010 Aug 2;7(4):1108-17.

[2]. Gamage RS, et al. Comparison of cRGDfK Peptide Probes with Appended Shielded Heptamethine Cyanine Dye (s775z) for Near Infrared Fluorescence Imaging of Cancer. *ACS Omega.* 2021 Oct 30;6(44):30130-30139.

**Caution: Product has not been fully validated for medical applications. For research use only.**

Tel: 609-228-6898

Fax: 609-228-5909

E-mail: tech@MedChemExpress.com

Address: 1 Deer Park Dr, Suite Q, Monmouth Junction, NJ 08852, USA