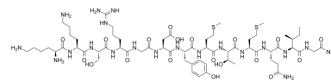


## IRS1-derived peptide

<b>Cat. No.:</b>	HY-P5433
<b>CAS No.:</b>	865778-50-3
<b>Molecular Formula:</b>	C <sub>63</sub> H <sub>108</sub> N <sub>20</sub> O <sub>19</sub> S <sub>2</sub>
<b>Molecular Weight:</b>	1513.78
<b>Sequence:</b>	Lys-Lys-Ser-Arg-Gly-Asp-Tyr-Met-Thr-Met-Gln-Ile-Gly-NH <sub>2</sub>
<b>Sequence Shortening:</b>	KKSRGDYMTMIG-NH <sub>2</sub>
<b>Target:</b>	Others
<b>Pathway:</b>	Others
<b>Storage:</b>	4°C, sealed storage, away from moisture and light * In solvent : -80°C, 6 months; -20°C, 1 month (sealed storage, away from moisture and light)



### SOLVENT & SOLUBILITY

#### In Vitro

H<sub>2</sub>O : 100 mg/mL (66.06 mM; Need ultrasonic)  
DMSO : 25 mg/mL (16.51 mM; Need ultrasonic)

Preparing Stock Solutions	Solvent Concentration	Mass		
		1 mg	5 mg	10 mg
	1 mM	0.6606 mL	3.3030 mL	6.6060 mL
	5 mM	0.1321 mL	0.6606 mL	1.3212 mL
	10 mM	0.0661 mL	0.3303 mL	0.6606 mL

Please refer to the solubility information to select the appropriate solvent.

### BIOLOGICAL ACTIVITY

#### Description

IRS1-derived peptide is a biological active peptide. (This is a peptide fragment (979-989) of the insulin receptor substrate-1 containing the sequence motif YMXM known to bind to the two domains of SH2 on the 85kDa subunit of phosphoinositide 3-kinase.)

**Caution: Product has not been fully validated for medical applications. For research use only.**

Tel: 609-228-6898

Fax: 609-228-5909

E-mail: tech@MedChemExpress.com

Address: 1 Deer Park Dr, Suite Q, Monmouth Junction, NJ 08852, USA