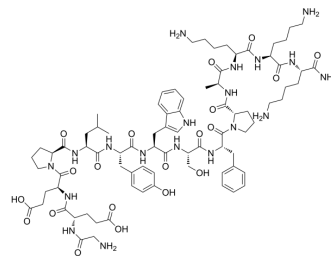


Srctide

Cat. No.:	HY-P5438
Molecular Formula:	C ₈₁ H ₁₁₉ N ₁₉ O ₂₀
Molecular Weight:	1678.93
Sequence:	Gly-Glu-Glu-Pro-Leu-Tyr-Trp-Ser-Phe-Pro-Ala-Lys-Lys-Lys-NH ₂
Sequence Shortening:	GEEPLYWSFPAKKK-NH ₂
Target:	Others
Pathway:	Others
Storage:	Sealed storage, away from moisture
	Powder -80°C 2 years
	-20°C 1 year



* In solvent : -80°C, 6 months; -20°C, 1 month (sealed storage, away from moisture)

SOLVENT & SOLUBILITY

In Vitro

DMSO : 25 mg/mL (14.89 mM; Need ultrasonic)

Preparing Stock Solutions	Solvent Concentration	Mass	1 mg	5 mg	10 mg
	1 mM		0.5956 mL	2.9781 mL	5.9562 mL
	5 mM		0.1191 mL	0.5956 mL	1.1912 mL
	10 mM		0.0596 mL	0.2978 mL	0.5956 mL

Please refer to the solubility information to select the appropriate solvent.

BIOLOGICAL ACTIVITY

Description

Srctide is a biological active peptide. (This is a peptide substrate for many protein kinases, such as Blk, BTK, cKit, EPHA1, EPHB2, EPHB3, ERBB4, FAK, Flt3, IGF-1R, ITK, Lck, MET, MUSK, Ret, Src, TIE2, TrkB, VEGF-R1 (Flt-1) and VEGF-R2 (KDR).)

Caution: Product has not been fully validated for medical applications. For research use only.

Tel: 609-228-6898

Fax: 609-228-5909

E-mail: tech@MedChemExpress.com

Address: 1 Deer Park Dr, Suite Q, Monmouth Junction, NJ 08852, USA