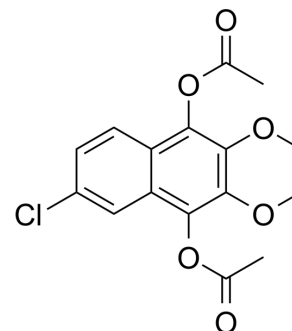


Lonapalene

Cat. No.:	HY-U00156		
CAS No.:	91431-42-4		
Molecular Formula:	C ₁₆ H ₁₅ ClO ₆		
Molecular Weight:	338.74		
Target:	Lipoxygenase		
Pathway:	Metabolic Enzyme/Protease		
Storage:	Powder	-20°C	3 years
		4°C	2 years
	In solvent	-80°C	6 months
		-20°C	1 month



SOLVENT & SOLUBILITY

In Vitro	DMSO : 100 mg/mL (295.21 mM; Need ultrasonic)					
	Preparing Stock Solutions	<div><div>Solvent</div><div>Concentration</div></div>	Mass	1 mg	5 mg	10 mg
		1 mM		2.9521 mL	14.7606 mL	29.5212 mL
		5 mM		0.5904 mL	2.9521 mL	5.9042 mL
		10 mM		0.2952 mL	1.4761 mL	2.9521 mL
Please refer to the solubility information to select the appropriate solvent.						
In Vivo	1. Add each solvent one by one: 10% DMSO >> 40% PEG300 >> 5% Tween-80 >> 45% saline Solubility: ≥ 2.5 mg/mL (7.38 mM); Clear solution					
	2. Add each solvent one by one: 10% DMSO >> 90% corn oil Solubility: ≥ 2.5 mg/mL (7.38 mM); Clear solution					

BIOLOGICAL ACTIVITY

Description	Lonapalene (RS4317) is a topically effective 5-lipoxygenase (5-LO) inhibitor.
IC ₅₀ & Target	5-LO
In Vitro	Lonapalene (RS4317) may be useful in the treatment of psoriasis, and that leukotriene B4 is a relevant mediator of the pathology of this disease ^[1] . MCE has not independently confirmed the accuracy of these methods. They are for reference only.

REFERENCES

[1]. Black AK, et al. Pharmacologic and clinical effects of lonapalene (RS 43179), a 5-lipoxygenase inhibitor, in psoriasis. J Invest Dermatol. 1990 Jul;95(1):50-4.

Caution: Product has not been fully validated for medical applications. For research use only.

Tel: 609-228-6898

Fax: 609-228-5909

E-mail: tech@MedChemExpress.com

Address: 1 Deer Park Dr, Suite Q, Monmouth Junction, NJ 08852, USA