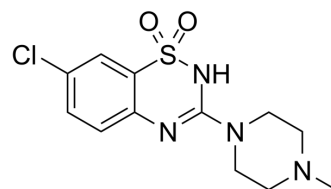


DU717

Cat. No.:	HY-U00182
CAS No.:	59943-31-6
Molecular Formula:	C ₁₂ H ₁₅ ClN ₄ O ₂ S
Molecular Weight:	314.79
Target:	Others
Pathway:	Others
Storage:	Please store the product under the recommended conditions in the Certificate of Analysis.



BIOLOGICAL ACTIVITY

Description	DU-717 is an antihypertensive agent.
In Vivo	<p>A gas chromatographic method has been developed which enables accurate determination of a new antihypertensive agent, DU-717, in plasma. Accurate determinations are possible over a concentration range from 10 to 150 ng/mL of DU-717 in plasma at a relative standard deviation of 6.2%. The minimum detectable concentration is 1 ng/mL. Plasma levels of DU-717 in spontaneously hypertensive and normotensive rats following single oral administrations (10 mg/kg) have also been determined^[1].</p> <p>MCE has not independently confirmed the accuracy of these methods. They are for reference only.</p>

PROTOCOL

Animal Administration ^[2]	<p>Rats^[2]</p> <p>DU-717 (100mg/kg per day, p.o.)-treated SHRSP, SHRSP fed on a HFC diet (including 20% suet, 5% cholesterol and 2% cholic acid) with 1% NaCl in the drinking water, ALR and NAR, 15 rats in each group, are used for EEG recording. Rats, anesthetized with intraperitoneal injection of pentobarbital (30mg/kg), are placed in a stereotaxic frame for exposing the skull, and 6 small pores of 1mm in diameter are made by a dental drill at frontal, parietal, and occipital areas on both sides. Then, stainless steel electrodes (220μ in diameter), insulated except a small loop which is formed at the tip in order to avoid any injury to the dura and the cortex, are inserted through the pores of the skull and settled gently on the dura. Electrodes on both sides are located 2mm apart from mid-sagittal line, and frontal (F), parietal (P), occipital (O) electrodes are located 5mm, 2.5 mm, and 0mm anterior to the interauricular line, respectively. The indifferent electrode (I) is placed on the mid-sagittal line, 4mm anterior to the bregma. All electrodes are connected with insulated copper wires to a miniature receptacle, and the whole assembly is embedded in dental cement. Two weeks after the operation, EEG is repeatedly recorded for several months. When EEG is recorded, rats are in a clear plastic cage (30×40×40cm) and could move freely. EEG is recorded by a ME-920, connected to an autoanalyzer MAF-5, and a photic stimulator is MS-2PS. Monopolar (I-F, I-P, I-O), and bipolar (F-P, P-O, O-F) leading are recorded. EEG is recorded during wakefulness and drowsiness. The recording calibration is 3cm/sec and 100μV/4mm.</p> <p>MCE has not independently confirmed the accuracy of these methods. They are for reference only.</p>
---	---

REFERENCES

[1]. Yamaguchi T, et al. Determination of 7-chloro-3-(4-methyl-1-piperazinyl)-4h-1,2,4-benzothiadiazine-1,1-dioxide (DU-717) in plasma using electron-capture gas chromatography. J Chromatogr. 1978 Oct 11;160(1):181-90.

[2]. R Horie. rats (ALR) and normotensive atherogenic rats (NAR).

Caution: Product has not been fully validated for medical applications. For research use only.

Tel: 609-228-6898

Fax: 609-228-5909

E-mail: tech@MedChemExpress.com

Address: 1 Deer Park Dr, Suite Q, Monmouth Junction, NJ 08852, USA