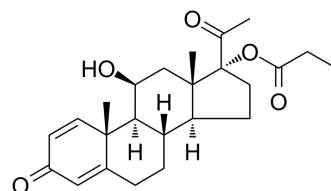


Deprodone propionate

Cat. No.:	HY-U00190		
CAS No.:	20424-00-4		
Molecular Formula:	C ₂₄ H ₃₂ O ₅		
Molecular Weight:	400.51		
Target:	Bacterial		
Pathway:	Anti-infection		
Storage:	Powder	-20°C	3 years
		4°C	2 years
	In solvent	-80°C	2 years
		-20°C	1 year



SOLVENT & SOLUBILITY

In Vitro	DMSO : 250 mg/mL (624.20 mM; Need ultrasonic)				
		Solvent Concentration	Mass 1 mg	5 mg	10 mg
	Preparing Stock Solutions	1 mM	2.4968 mL	12.4841 mL	24.9682 mL
		5 mM	0.4994 mL	2.4968 mL	4.9936 mL
10 mM		0.2497 mL	1.2484 mL	2.4968 mL	
Please refer to the solubility information to select the appropriate solvent.					
In Vivo	<ol style="list-style-type: none"> Add each solvent one by one: 10% DMSO >> 40% PEG300 >> 5% Tween-80 >> 45% saline Solubility: ≥ 2.08 mg/mL (5.19 mM); Clear solution Add each solvent one by one: 10% DMSO >> 90% (20% SBE-β-CD in saline) Solubility: ≥ 2.08 mg/mL (5.19 mM); Clear solution Add each solvent one by one: 10% DMSO >> 90% corn oil Solubility: ≥ 2.08 mg/mL (5.19 mM); Clear solution 				

BIOLOGICAL ACTIVITY

Description	Deprodone propionate (RD20000) is a corticosteroid which is obtained by esterifying with propionic acid the 17-position of the prednisolone skeleton and deoxidating its 21-position.
In Vitro	<p>Deprodone propionate as an effective ingredient, can exhibit its effects to the maximum extent and over a prolonged period of time, do not have skin irritation, and are physicochemically stable. Deprodone propionate can be maintained in a stably suspended state owing to the thickening action of the suspending agent^[1].</p> <p>MCE has not independently confirmed the accuracy of these methods. They are for reference only.</p>

REFERENCES

[1]. Takashi Narui, et al. Water and deprodone propionate -containing external preparations. EP 0473810 B1.

Caution: Product has not been fully validated for medical applications. For research use only.

Tel: 609-228-6898

Fax: 609-228-5909

E-mail: tech@MedChemExpress.com

Address: 1 Deer Park Dr, Suite Q, Monmouth Junction, NJ 08852, USA