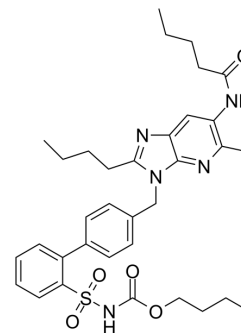


## L162441

Cat. No.:	HY-U00245
CAS No.:	154512-46-6
Molecular Formula:	C <sub>34</sub> H <sub>43</sub> N <sub>5</sub> O <sub>5</sub> S
Molecular Weight:	633.8
Target:	Angiotensin Receptor
Pathway:	GPCR/G Protein
Storage:	Please store the product under the recommended conditions in the Certificate of Analysis.



### BIOLOGICAL ACTIVITY

Description	L162441 is an Angiotensin type 1 receptor antagonist.
IC <sub>50</sub> & Target	Angiotensin type 1 receptor

**Caution: Product has not been fully validated for medical applications. For research use only.**

Tel: 609-228-6898

Fax: 609-228-5909

E-mail: [tech@MedChemExpress.com](mailto:tech@MedChemExpress.com)

Address: 1 Deer Park Dr, Suite Q, Monmouth Junction, NJ 08852, USA