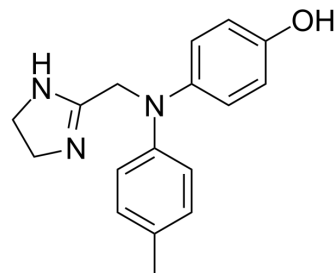


Phentolamine Analogue 1

Cat. No.:	HY-U00404
CAS No.:	47142-51-8
Molecular Formula:	C ₁₇ H ₁₉ N ₃ O
Molecular Weight:	281.35
Target:	Others
Pathway:	Others
Storage:	Please store the product under the recommended conditions in the Certificate of Analysis.



BIOLOGICAL ACTIVITY

Description	Phentolamine Analogue 1 is an analogue of phentolamine. Phentolamine is a nonselective alpha-adrenergic antagonist.
In Vitro	Phentolamine Analogue 1 (3h) is an analogue of phentolamine ^[1] . MCE has not independently confirmed the accuracy of these methods. They are for reference only.

REFERENCES

[1]. J.A. Parihar, et al. Alkylolation of diphenylamines with chloroacetonitrile: a new entry to phentolamine analogues. Journal of Chemical Research (2004), (3), 220-222.

Caution: Product has not been fully validated for medical applications. For research use only.

Tel: 609-228-6898

Fax: 609-228-5909

E-mail: tech@MedChemExpress.com

Address: 1 Deer Park Dr, Suite Q, Monmouth Junction, NJ 08852, USA