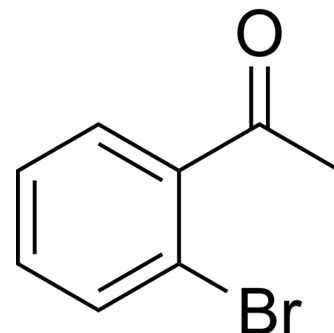


2'-Bromoacetophenone

Cat. No.:	HY-W007689		
CAS No.:	2142-69-0		
Molecular Formula:	C ₈ H ₇ BrO		
Molecular Weight:	199.05		
Target:	Biochemical Assay Reagents		
Pathway:	Others		
Storage:	Pure form	-20°C	3 years
		4°C	2 years
	In solvent	-80°C	6 months
		-20°C	1 month



BIOLOGICAL ACTIVITY

Description	2'-Bromoacetophenone is a biochemical reagent that can be used as a biological material or organic compound for life science related research.
In Vitro	2-bromoacetophenone is employed in the selective derivatization of cytosine moieties for the determination of global DNA methylation by reversed phase high performance liquid chromatography with spectrofluorometric detection. MCE has not independently confirmed the accuracy of these methods. They are for reference only.

Caution: Product has not been fully validated for medical applications. For research use only.

Tel: 609-228-6898

Fax: 609-228-5909

E-mail: tech@MedChemExpress.com

Address: 1 Deer Park Dr, Suite Q, Monmouth Junction, NJ 08852, USA