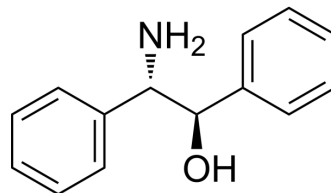


## (1R,2S)-2-Amino-1,2-diphenylethanol

|                    |  |
|--------------------|--|
| Cat. No.:          | HY-W007825   |
| CAS No.:           | 23190-16-1   |
| Molecular Formula: | C <sub>14</sub> H <sub>15</sub> NO   |
| Molecular Weight:  | 213.28   |
| Target:            | Biochemical Assay Reagents   |
| Pathway:           | Others   |
| Storage:           | 4°C, protect from light, stored under nitrogen<br>* In solvent : -80°C, 6 months; -20°C, 1 month (protect from light, stored under nitrogen) |



### BIOLOGICAL ACTIVITY

|             |  |
|-------------|--|
| Description | (1R,2S)-2-Amino-1,2-diphenylethanol is a biochemical reagent that can be used as a biological material or organic compound for life science related research.  |
| In Vitro    | (1R,2S)-(-)-2-Amino-1,2-diphenylethanol (CAS# 23190-16-1) is a chiral auxiliary useful for synthesis and coupling reactions. MCE has not independently confirmed the accuracy of these methods. They are for reference only. |

**Caution: Product has not been fully validated for medical applications. For research use only.**

Tel: 609-228-6898

Fax: 609-228-5909

E-mail: tech@MedChemExpress.com

Address: 1 Deer Park Dr, Suite Q, Monmouth Junction, NJ 08852, USA