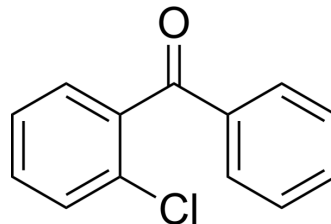


(2-Chlorophenyl)(phenyl)methanone

Cat. No.:	HY-W014114
CAS No.:	5162-03-8
Molecular Formula:	C ₁₃ H ₉ ClO
Molecular Weight:	216.66
Target:	Biochemical Assay Reagents
Pathway:	Others
Storage:	Please store the product under the recommended conditions in the Certificate of Analysis.



BIOLOGICAL ACTIVITY

Description	(2-Chlorophenyl)(phenyl)methanone is a biochemical reagent that can be used as a biological material or organic compound for life science related research.
In Vitro	(2-Chlorophenyl)phenyl-methanone is used as a pharmaceutical intermediate. MCE has not independently confirmed the accuracy of these methods. They are for reference only.

Caution: Product has not been fully validated for medical applications. For research use only.

Tel: 609-228-6898

Fax: 609-228-5909

E-mail: tech@MedChemExpress.com

Address: 1 Deer Park Dr, Suite Q, Monmouth Junction, NJ 08852, USA