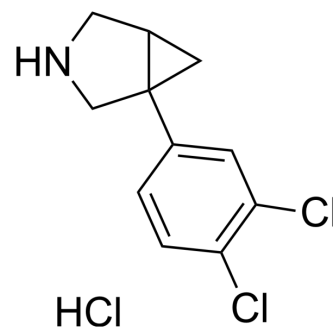


DOV-216,303

Cat. No.:	HY-W061043
CAS No.:	86215-36-3
Molecular Formula:	C ₁₁ H ₁₂ Cl ₃ N
Molecular Weight:	264.58
Target:	Serotonin Transporter; Dopamine Transporter
Pathway:	Neuronal Signaling
Storage:	Please store the product under the recommended conditions in the Certificate of Analysis.



BIOLOGICAL ACTIVITY

Description	DOV-216,303 is an antidepressant compound. DOV-216,303 inhibits the reuptake of norepinephrine (NE), serotonin (5-HT), and dopamine (DA), with IC ₅₀ values of 14 nM, 20 nM and 78 nM for hSERT, hNET and hDAT, respectively. DOV-216,303 increases monoamine release in the prefrontal cortex of olfactory bulbectomized (OBX) rats ^{[1][2][3]} .
IC ₅₀ & Target	14 nM, 20 nM and 78 nM for hSERT, hNET and hDAT ^[2]

REFERENCES

- [1]. Skolnick P, et al. Preclinical and clinical pharmacology of DOV 216,303, a "triple" reuptake inhibitor. *CNS Drug Rev.* 2006 Summer;12(2):123-34.
- [2]. Shao L, et al. Discovery of N-methyl-1-(1-phenylcyclohexyl)methanamine, a novel triple serotonin, norepinephrine, and dopamine reuptake inhibitor. *Bioorg Med Chem Lett.* 2011 Mar 1;21(5):1438-41.
- [3]. Prins J, et al. The putative antidepressant DOV 216,303, a triple reuptake inhibitor, increases monoamine release in the prefrontal cortex of olfactory bulbectomized rats. *Eur J Pharmacol.* 2010 May 10;633(1-3):55-61.

Caution: Product has not been fully validated for medical applications. For research use only.

Tel: 609-228-6898

Fax: 609-228-5909

E-mail: tech@MedChemExpress.com

Address: 1 Deer Park Dr, Suite Q, Monmouth Junction, NJ 08852, USA