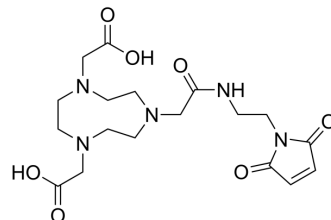


Maleimide-NOTA

Cat. No.:	HY-W087027		
CAS No.:	1295584-83-6		
Molecular Formula:	C ₁₈ H ₂₇ N ₅ O ₇		
Molecular Weight:	425.44		
Target:	Others		
Pathway:	Others		
Storage:	Powder	-20°C	3 years
		4°C	2 years
	In solvent	-80°C	6 months
		-20°C	1 month



SOLVENT & SOLUBILITY

In Vitro

H₂O : 250 mg/mL (587.63 mM; Need ultrasonic)

Concentration	Mass		
	1 mg	5 mg	10 mg
1 mM	2.3505 mL	11.7525 mL	23.5051 mL
5 mM	0.4701 mL	2.3505 mL	4.7010 mL
10 mM	0.2351 mL	1.1753 mL	2.3505 mL

Please refer to the solubility information to select the appropriate solvent.

BIOLOGICAL ACTIVITY

Description

Maleimide-NOTA is a chelator for the labeling of peptides and antibodies. Maleimide-NOTA can react with cysteine^[1].

REFERENCES

[1]. Dora Mugoli Chigoho, et al. Site-Specific Radiolabeling of a Human PD-L1 Nanobody via Maleimide-Cysteine Chemistry. *Pharmaceuticals (Basel)*. 2021 Jun 8;14(6):550.

Caution: Product has not been fully validated for medical applications. For research use only.

Tel: 609-228-6898

Fax: 609-228-5909

E-mail: tech@MedChemExpress.com

Address: 1 Deer Park Dr, Suite Q, Monmouth Junction, NJ 08852, USA