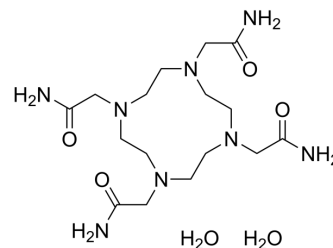


DOTA-amide dihydrate

Cat. No.:	HY-W088413A
Molecular Formula:	C ₁₆ H ₃₆ N ₈ O ₆
Molecular Weight:	436.51
Target:	Biochemical Assay Reagents
Pathway:	Others
Storage:	Please store the product under the recommended conditions in the Certificate of Analysis.



BIOLOGICAL ACTIVITY

Description

DOTA-amide (dihydrate) is a Bifunctional Chelators (BFCs). DOTA-amide (dihydrate) binds to the Affibody molecule ZHER2:S1. Its complex binds specifically to HER2 and can be used to detect bone metastases, which are common in prostate cancer^[1].

REFERENCES

[1]. Malmberg J, et al. Comparative evaluation of synthetic anti-HER2 Affibody molecules site-specifically labelled with ¹¹¹In using N-terminal DOTA, NOTA and NODAGA chelators in mice bearing prostate cancer xenografts. *Eur J Nucl Med Mol Imaging*. 2012 Mar;39(3):481-92

Caution: Product has not been fully validated for medical applications. For research use only.

Tel: 609-228-6898

Fax: 609-228-5909

E-mail: tech@MedChemExpress.com

Address: 1 Deer Park Dr, Suite Q, Monmouth Junction, NJ 08852, USA