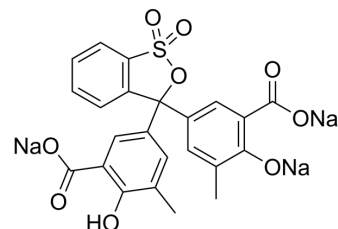


Eriochrome cyanine R indicator (C.I. 43820)

Cat. No.:	HY-W110884
CAS No.:	3564-18-9
Molecular Formula:	C ₂₃ H ₁₅ Na ₃ O ₉ S
Molecular Weight:	536.39
Target:	Biochemical Assay Reagents
Pathway:	Others
Storage:	Please store the product under the recommended conditions in the Certificate of Analysis.



BIOLOGICAL ACTIVITY

Description

Eriochrome cyanine R indicator (C.I. 43820) is a biochemical reagent that can be used as a biological material or organic compound for life science related research.

Caution: Product has not been fully validated for medical applications. For research use only.

Tel: 609-228-6898

Fax: 609-228-5909

E-mail: tech@MedChemExpress.com

Address: 1 Deer Park Dr, Suite Q, Monmouth Junction, NJ 08852, USA