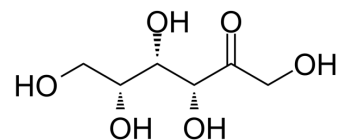


D-(+)-Sorbose

Cat. No.: HY-W145497
CAS No.: 3615-56-3
Molecular Formula: C₆H₁₂O₆
Molecular Weight: 180.16
Target: Insulin Receptor
Pathway: Protein Tyrosine Kinase/RTK
Storage: 4°C, protect from light
 * In solvent : -80°C, 6 months; -20°C, 1 month (protect from light)



SOLVENT & SOLUBILITY

In Vitro

H₂O : 125 mg/mL (693.83 mM; Need ultrasonic)

	Solvent Concentration	Mass	1 mg	5 mg	10 mg
Preparing Stock Solutions	1 mM		5.5506 mL	27.7531 mL	55.5062 mL
	5 mM		1.1101 mL	5.5506 mL	11.1012 mL
	10 mM		0.5551 mL	2.7753 mL	5.5506 mL

Please refer to the solubility information to select the appropriate solvent.

BIOLOGICAL ACTIVITY

Description

D-(+)-Sorbose, an active enantiomer of D-Sorbose, which inhibits disaccharidase activity and demonstrates suppressive action on postprandial blood levels of glucose and insulin in the rat. D-sorbose acts as a sweetener may contribute to the prevention of lifestyle-related diseases, such as type 2 diabetes mellitus^[1].

REFERENCES

[1]. Tsuneyuki Oku, et al. D-sorbose inhibits disaccharidase activity and demonstrates suppressive action on postprandial blood levels of glucose and insulin in the rat. Nutr Res. 2014 Nov;34(11):961-7.

Caution: Product has not been fully validated for medical applications. For research use only.

Tel: 609-228-6898

Fax: 609-228-5909

E-mail: tech@MedChemExpress.com

Address: 1 Deer Park Dr, Suite Q, Monmouth Junction, NJ 08852, USA