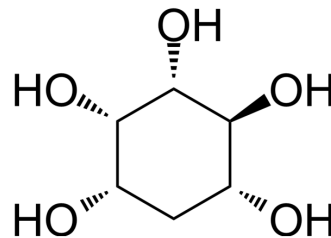


## (+)-epi-Quercitol

Cat. No.:	HY-W145676
CAS No.:	131435-06-8
Molecular Formula:	C <sub>6</sub> H <sub>12</sub> O <sub>5</sub>
Molecular Weight:	164.16
Target:	Biochemical Assay Reagents
Pathway:	Others
Storage:	Please store the product under the recommended conditions in the Certificate of Analysis.



### BIOLOGICAL ACTIVITY

#### Description

(+)-epi-Quercitol is a biochemical reagent that can be used as a biological material or organic compound for life science related research.

**Caution: Product has not been fully validated for medical applications. For research use only.**

Tel: 609-228-6898

Fax: 609-228-5909

E-mail: [tech@MedChemExpress.com](mailto:tech@MedChemExpress.com)

Address: 1 Deer Park Dr, Suite Q, Monmouth Junction, NJ 08852, USA