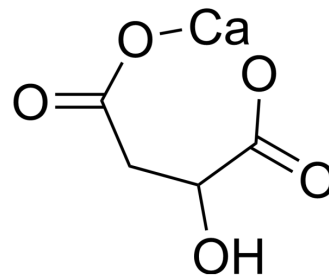


Calcium malate

Cat. No.:	HY-W250305
CAS No.:	16426-50-9
Molecular Formula:	C ₄ H ₄ CaO ₅
Molecular Weight:	172.15
Target:	Biochemical Assay Reagents
Pathway:	Others
Storage:	Please store the product under the recommended conditions in the Certificate of Analysis.



BIOLOGICAL ACTIVITY

Description
Calcium malate consists of calcium and malic acid.

Caution: Product has not been fully validated for medical applications. For research use only.

Tel: 609-228-6898

Fax: 609-228-5909

E-mail: tech@MedChemExpress.com

Address: 1 Deer Park Dr, Suite Q, Monmouth Junction, NJ 08852, USA