

## Maltodextrin, dextrose equivalent 16.5-19.5

Cat. No.: HY-W250795  
 CAS No.: 9050-36-6  
 Batch No.: 420991  
 Chemical Name: Maltodextrin, dextrose equivalent 16.5-19.5

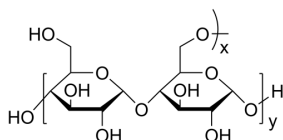
### PHYSICAL AND CHEMICAL PROPERTIES

Molecular Formula:  $(C_6H_{10}O_5)_n \cdot xH_2O$

Storage:

Powder	-20°C	3 years
	4°C	2 years
In solvent	-80°C	6 months
	-20°C	1 month

Chemical Structure:



### ANALYTICAL DATA

Appearance: White to off-white (Solid)

Dextrose equivalent: 18.8%

Water(KF): 5.8%

PH: 5.0

H<sub>2</sub>CO<sub>3</sub> Water(KF): 0.18%

Iodine test: No blue reaction

Conclusion: The product has been tested and complies with the given specifications.

**Caution: Product has not been fully validated for medical applications. For research use only.**

Tel: 609-228-6898      Fax: 609-228-5909      E-mail: tech@MedChemExpress.com  
 Address: 1 Deer Park Dr, Suite Q, Monmouth Junction, NJ 08852, USA