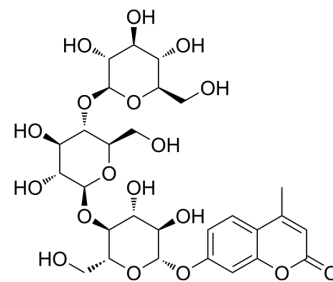


## 4-Methylumbelliferyl $\beta$ -cellotrioside

Cat. No.:	HY-W345102
CAS No.:	84325-18-8
Molecular Formula:	C <sub>28</sub> H <sub>38</sub> O <sub>18</sub>
Molecular Weight:	662.59
Target:	Fluorescent Dye
Pathway:	Others
Storage:	Please store the product under the recommended conditions in the Certificate of Analysis.



### BIOLOGICAL ACTIVITY

#### Description

4-Methylumbelliferyl  $\beta$ -cellotrioside, a chromogenic substrate for  $\beta$ -glycosidases, is a cellulose fluorescent derivative<sup>[1]</sup>.

### REFERENCES

[1]. M Pedraza-Reyes, et al. The bifunctional enzyme chitosanase-cellulase produced by the gram-negative microorganism *Myxobacter* sp. AL-1 is highly similar to *Bacillus subtilis* endoglucanases. *Arch Microbiol.* 1997 Oct;168(4):321-7.

**Caution: Product has not been fully validated for medical applications. For research use only.**

Tel: 609-228-6898

Fax: 609-228-5909

E-mail: tech@MedChemExpress.com

Address: 1 Deer Park Dr, Suite Q, Monmouth Junction, NJ 08852, USA