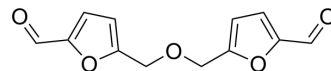


Cirsiumaldehyde

Cat. No.:	HY-W357642
CAS No.:	7389-38-0
Molecular Formula:	C ₁₂ H ₁₀ O ₅
Molecular Weight:	234.2
Target:	Others
Pathway:	Others
Storage:	Please store the product under the recommended conditions in the Certificate of Analysis.



BIOLOGICAL ACTIVITY

Description

Cirsiumaldehyde can be isolated from the roots of *Anemone altaica*^[1].

REFERENCES

[1]. Zhong-Jie ZOU, et al. Chemical Constituents of the Roots of *Anemone altaica* Fisch. ex C. A. Journal of Integrative Plant Biology. Mey. Volume47, Issue9, 2005, Pages 1145-1147.

Caution: Product has not been fully validated for medical applications. For research use only.

Tel: 609-228-6898

Fax: 609-228-5909

E-mail: tech@MedChemExpress.com

Address: 1 Deer Park Dr, Suite Q, Monmouth Junction, NJ 08852, USA