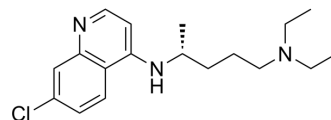


(-)-Chloroquine

Cat. No.:	HY-W614112
CAS No.:	58175-87-4
Molecular Formula:	C ₁₈ H ₂₆ ClN ₃
Molecular Weight:	319.87
Target:	Others
Pathway:	Others
Storage:	Please store the product under the recommended conditions in the Certificate of Analysis.



BIOLOGICAL ACTIVITY

Description	(-)-Chloroquine is a chloroquine enantiomer ^[1] .
-------------	--

REFERENCES

[1]. Wongwan S, et al. Development and validation of a capillary electrophoresis assay for the determination of the stereoisomeric purity of chloroquine enantiomers. *Electrophoresis*. 2011 Oct;32(19):2669-72.

Caution: Product has not been fully validated for medical applications. For research use only.

Tel: 609-228-6898

Fax: 609-228-5909

E-mail: tech@MedChemExpress.com

Address: 1 Deer Park Dr, Suite Q, Monmouth Junction, NJ 08852, USA