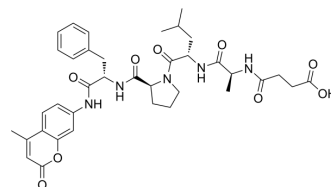


## Suc-Ala-Leu-Pro-Phe-AMC

Cat. No.:	HY-W719799
CAS No.:	142997-31-7
Molecular Formula:	C <sub>37</sub> H <sub>45</sub> N <sub>5</sub> O <sub>9</sub>
Molecular Weight:	703.78
Target:	Others
Pathway:	Others
Storage:	Please store the product under the recommended conditions in the Certificate of Analysis.



### BIOLOGICAL ACTIVITY

Description	Suc-Ala-Leu-Pro-Phe-AMC is a PPIase fluorogenic substrate <sup>[1]</sup> .
-------------	----------------------------------------------------------------------------

### REFERENCES

[1]. Sartori MR, et al. Enhanced resistance to Ca<sup>2+</sup>-induced mitochondrial permeability transition in the long-lived red-footed tortoise *Chelonoidis carbonaria*. *J Exp Biol.* 2022 Jan 1;225(1):jeb243532.

**Caution: Product has not been fully validated for medical applications. For research use only.**

Tel: 609-228-6898

Fax: 609-228-5909

E-mail: tech@MedChemExpress.com

Address: 1 Deer Park Dr, Suite Q, Monmouth Junction, NJ 08852, USA