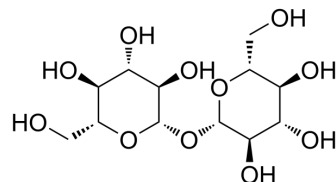


## β,β-Trehalose

Cat. No.:	HY-W721582
CAS No.:	499-23-0
Molecular Formula:	C <sub>12</sub> H <sub>22</sub> O <sub>11</sub>
Molecular Weight:	342.3
Target:	Others
Pathway:	Others
Storage:	Please store the product under the recommended conditions in the Certificate of Analysis.



### BIOLOGICAL ACTIVITY

#### Description

β,β-Trehalose is an analog of trehalose. β,β-Trehalose can support the growth of shoot tips of *Cuscuta*. β,β-Trehalose can be cleaved by nonspecific β-glucosidase<sup>[1]</sup>.

### REFERENCES

[1]. K. Veluthambi, et al. Trehalose Toxicity in *Cuscuta reflexa* 1: CORRELATION WITH LOW TREHALASE ACTIVITY. *Plant Physiol.* 1981, 68.

**Caution: Product has not been fully validated for medical applications. For research use only.**

Tel: 609-228-6898

Fax: 609-228-5909

E-mail: tech@MedChemExpress.com

Address: 1 Deer Park Dr, Suite Q, Monmouth Junction, NJ 08852, USA