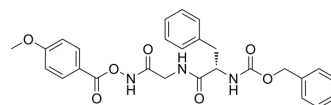


Z-FG-NHO-BzOME

Cat. No.:	HY-W790014
CAS No.:	180313-86-4
Molecular Formula:	C ₂₇ H ₂₇ N ₃ O ₇
Molecular Weight:	505.52
Target:	Cathepsin
Pathway:	Metabolic Enzyme/Protease
Storage:	Sealed storage, away from moisture and light Powder -80°C 2 years -20°C 1 year

* In solvent : -80°C, 6 months; -20°C, 1 month (sealed storage, away from moisture and light)



SOLVENT & SOLUBILITY

In Vitro

DMSO : ≥ 125 mg/mL (247.27 mM)
* "≥" means soluble, but saturation unknown.

	Solvent		Mass		
	Concentration		1 mg	5 mg	10 mg
Preparing Stock Solutions	1 mM		1.9782 mL	9.8908 mL	19.7816 mL
	5 mM		0.3956 mL	1.9782 mL	3.9563 mL
	10 mM		0.1978 mL	0.9891 mL	1.9782 mL

Please refer to the solubility information to select the appropriate solvent.

BIOLOGICAL ACTIVITY

Description

Z-FG-NHO-BzOME is a cysteine protease inhibitor that selectively inhibits cathepsin B, cathepsin L, cathepsin S, and papain [1].

REFERENCES

[1]. Rajgopal Yadavalli, et al. Calpain-dependent endoproteolytic cleavage of PrPSc modulates scrapie prion propagation. J Biol Chem. 2004 May 21;279(21):21948-56.

Caution: Product has not been fully validated for medical applications. For research use only.

Tel: 609-228-6898

Fax: 609-228-5909

E-mail: tech@MedChemExpress.com

Address: 1 Deer Park Dr, Suite Q, Monmouth Junction, NJ 08852, USA