

# CETP

## Cholesteryl ester transfer protein

Cholesteryl ester transfer protein (CETP) is a plasma glycoprotein that facilitates the transfer of cholesteryl esters from the atheroprotective high density lipoprotein (HDL) to the proatherogenic low density lipoprotein cholesterol (LDL) and very low density lipoprotein cholesterol (VLDL) leading to lower levels of HDL but raising the levels of proatherogenic LDL and VLDL. CETP inhibitors are a class of drugs that targets the CETP enzyme to significantly increase serum HDL-C and decrease LDL-C levels. Inhibition of CETP is considered a potential approach to treat dyslipidemia.

Alterations of CETP activity levels can be caused by single-base polymorphisms as well as by alternative splicing. Several common variants in CETP have been reported to be associated with variation in plasma lipid levels, CAD risk and/or CETP mass/activity. The rare genetic variants in the CETP gene also contribute to the phenotypic variation of HDL-C in the general population.

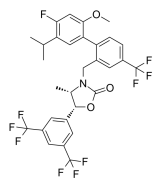
## CETP Inhibitors

### Anacetrapib

(MK-0859)

Cat. No.: HY-12090

Anacetrapib is a potent CETP inhibitor, with  $IC_{50}$ s of  $7.9 \pm 2.5$  nM and  $11.8 \pm 1.9$  nM for rhCETP and C13S CETP mutant, respectively.

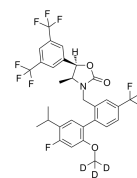


**Purity:** 99.62%  
**Clinical Data:** Phase 3  
**Size:** 10 mM  $\times$  1 mL, 5 mg, 10 mg, 50 mg, 100 mg

### Anacetrapib-d3

Cat. No.: HY-12090S

Anacetrapib-d3 is the deuterium labeled Anacetrapib. Anacetrapib is a potent CETP inhibitor, with  $IC_{50}$ s of  $7.9 \pm 2.5$  nM and  $11.8 \pm 1.9$  nM for rhCETP and C13S CETP mutant, respectively.

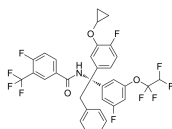


**Purity:** >98%  
**Clinical Data:** No Development Reported  
**Size:** 5 mg

### BMS-795311

Cat. No.: HY-19614

BMS-795311 is a potent and orally bioavailable inhibitor of **cholesteryl ester transfer protein (CETP)**, with  $IC_{50}$ s of 4 nM in an enzyme-based scintillation proximity assay (SPA) and 0.22  $\mu$ M in a human whole plasma assay (hWPA), respectively.

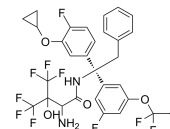


**Purity:** >98%  
**Clinical Data:** No Development Reported  
**Size:** 1 mg, 5 mg

### CETP-IN-3

Cat. No.: HY-128338

CETP-IN-3 (Compound 13) is a small molecule inhibitor of the plasma glycoprotein cholesterol ester transfer protein (CETP), elevating HDL-C through inhibition of CETP.

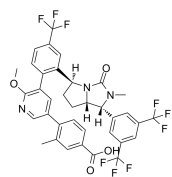


**Purity:** >98%  
**Clinical Data:** No Development Reported  
**Size:** 1 mg, 5 mg

### CETP-IN-4

Cat. No.: HY-142643

CETP-IN-4 is a **cholesteryl ester transfer protein (CETP)** inhibitor.

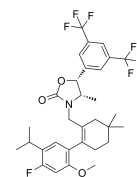


**Purity:** >98%  
**Clinical Data:** No Development Reported  
**Size:** 1 mg, 5 mg

### CKD-519

Cat. No.: HY-116078

CKD-519 is a selective and potent **cholesteryl ester transfer protein (CETP)** inhibitor, which inhibits CETP-mediated transfer of cholesteryl ester in human serum with an  $IC_{50}$  of 2.3 nM.

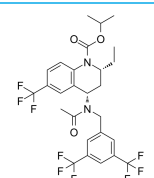


**Purity:** >98%  
**Clinical Data:** Phase 2  
**Size:** 1 mg, 5 mg

### CP-532623

Cat. No.: HY-123039

CP-532623 is a CETP inhibitor and elevates high-density lipoprotein cholesterol. CP-532623 is a close structural analogue of Torcetrapib. CP-532623 has highly lipophilic properties.



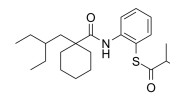
**Purity:**  $\geq 99.0\%$   
**Clinical Data:** No Development Reported  
**Size:** 10 mM  $\times$  1 mL, 5 mg, 10 mg

### Dalcetrapib

(JTT-705; RO4607381)

Cat. No.: HY-14950

Dalcetrapib (JTT-705; RO-4607381) is a rhCETP inhibitor with  $IC_{50}$  of 0.2  $\mu$ M that increases the plasma HDL cholesterol.  $IC_{50}$  value: 0.2  $\mu$ M Target: CETP in vitro: Dalcetrapib modulates CETP activity.



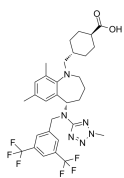
**Purity:** 99.42%  
**Clinical Data:** Phase 3  
**Size:** 10 mM  $\times$  1 mL, 50 mg, 100 mg, 250 mg

### Evacetrapib

(LY2484595)

Cat. No.: HY-13327

Evacetrapib is a potent and selective of CETP inhibitor, which inhibits human recombinant CETP protein ( $IC_{50}$  5.5 nM) and CETP activity in human plasma ( $IC_{50}$  36 nM) in vitro.

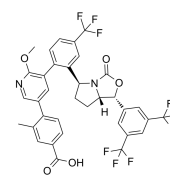


**Purity:** 99.42%  
**Clinical Data:** Phase 3  
**Size:** 10 mM  $\times$  1 mL, 5 mg, 10 mg, 50 mg, 100 mg

### MK-8262

Cat. No.: HY-132303

MK-8262 is an orally active and potent **cholesteryl ester transfer protein (CETP)** inhibitor with an  $IC_{50}$  of 53 nM and a log D of 5.3.

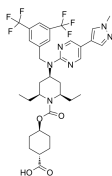


**Purity:** >98%  
**Clinical Data:** No Development Reported  
**Size:** 1 mg, 5 mg

### TAP311

Cat. No.: HY-107997

TAP311 is a cholesteryl ester transfer protein (CETP) inhibitor with an  $IC_{50}$  of 62 nM.

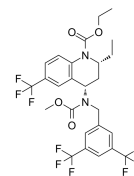


**Purity:** >98%  
**Clinical Data:** Phase 1  
**Size:** 1 mg, 5 mg

### Torcetrapib (CP-529414)

Cat. No.: HY-12089

Torcetrapib (CP-529414) is a selective, potent cholesteryl ester transfer protein (CETP) inhibitor. A typical inhibition curve for whole human plasma, having a CETP concentration of 37 nM.



**Purity:** 99.39%  
**Clinical Data:** Phase 3  
**Size:** 10 mM × 1 mL, 5 mg, 10 mg, 50 mg