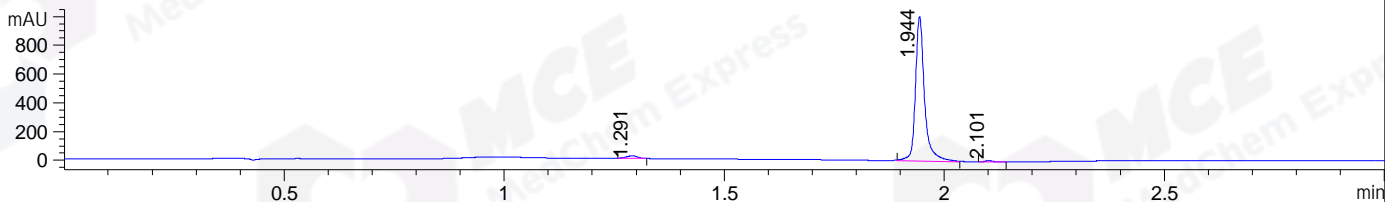
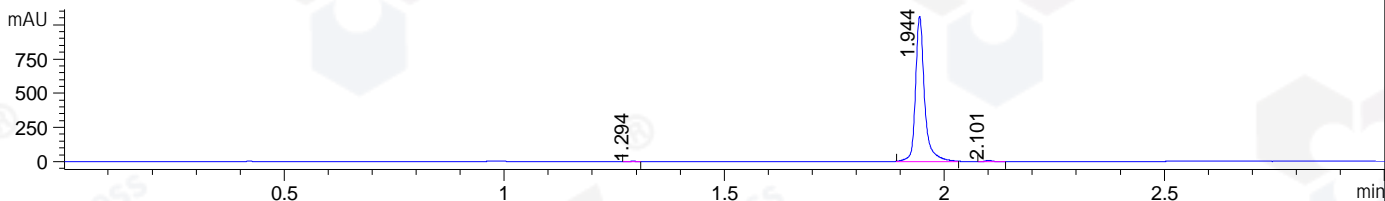


File ..\DATA\2019\20190411\561\CPK2019-410-20828.D Tgt Mass (CHM):
Injection Date : 11 Apr 19 4:54 pm +0800 Seq. Line : 28
Sample Name : CPK2019-410-20828 Location : P1-B-09
Acq. Operator : LQ_1052 Inj : 1
Spec. Reported : MS Integration Inj Volume : 1 ul
Acq. Method : D:\Chem32\1\data\2019\20190411\561\1-POS-3MIN-1.M
Analysis Method : D:\CHEM32\1\DATA\2019\20190411\561\1-POS-3MIN-1.M
Catalog No : HY-100012 Batch#20828
Method Info : Mobile Phase: A: water(0.01%TFA) B:ACN(0.01%TFA)
Gradient: 5% to 95%B within 1.3 min
Flow Rate :1.8ml/min
Column :SunFire C18, 4.6*50mm,3.5um A-RP-314
Oven Temperature : 45

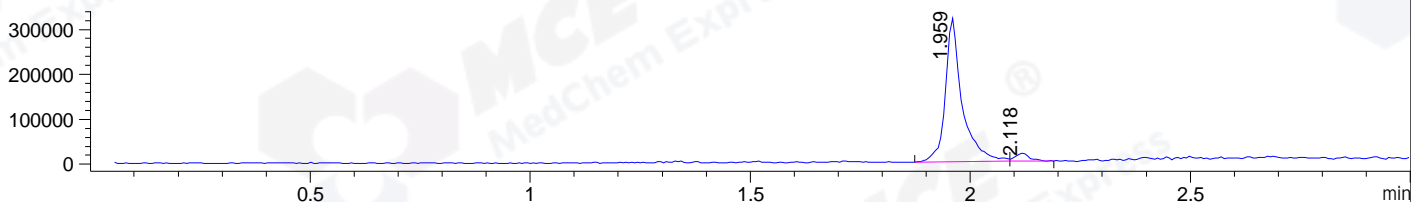
DAD1 B, Sig=214,4 Ref=off



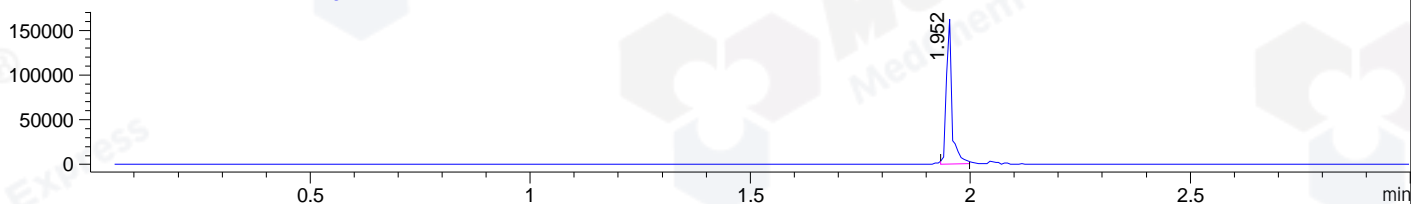
DAD1 C, Sig=254,4 Ref=off



MSD1 TIC, MS File ES-API, Pos, Scan, Frag: 70



Ion 337.4, MSD1 337.4, Target Mass 336.4 +H Positive, EIC=337.1:338.1



Integration Results for DAD1 B, Sig=214,4 Ref=off

RetTim	Width	Area	Height	Area%	MS (+)
1.29	0.03	30.34	18.15	2.04	ND
1.94	0.02	1445.42	1006.14	97.14	337
2.10	0.02	12.18	10.01	0.82	387

Integration Results for DAD1 C, Sig=254,4 Ref=off

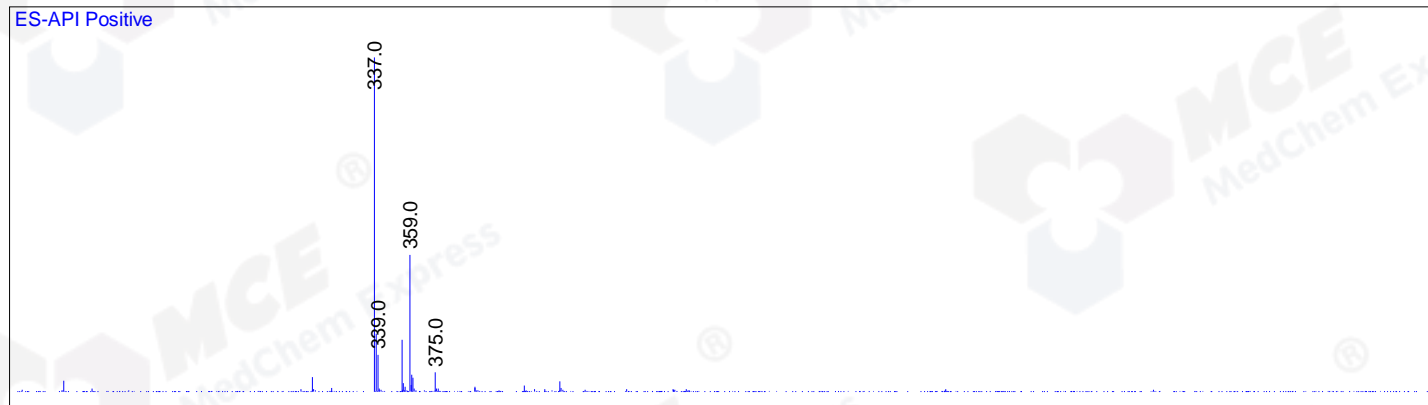
RetTim	Width	Area	Height	Area%	MS (+)
1.29	0.02	1.91	1.35	0.12	ND
1.94	0.02	1530.85	1063.97	99.02	337
2.10	0.02	13.29	10.52	0.86	387

Integration Results for MSD1 TIC, MS File

RetTim	Width	Area	Height	Area%	MS (+)
1.96	0.04	850332.06	320044.59	95.50	337
2.12	0.03	40069.82	18284.48	4.50	387

Ret. Time: 1.96

<<<< POSITIVE SPECTRA >>>>



Ret. Time: 2.12

