

File ..\DATA\2019\20190626\615\CPK2019-625-20390.D Tgt Mass (CHM):

Injection Date : 26 Jun 19 12:03 pm +0800 Seq. Line : 31

Sample Name : CPK2019-625-20390 Location : P1-B-05

Acq. Operator : ZJ_1432 Inj : 1

Spec. Reported : MS Integration Inj Volume : 1 ul

Acq. Method : D:\Chem32\1\data\2019\20190626\615\1-POS-3MIN.M

Analysis Method : D:\CHEM32\1\DATA\2019\20190626\615\1-POS-3MIN.M

Catalog No : HY-100014 Batch#20390

Method Info : Mobile Phase: A: water(0.01%TFA) B:ACN(0.01%TFA)

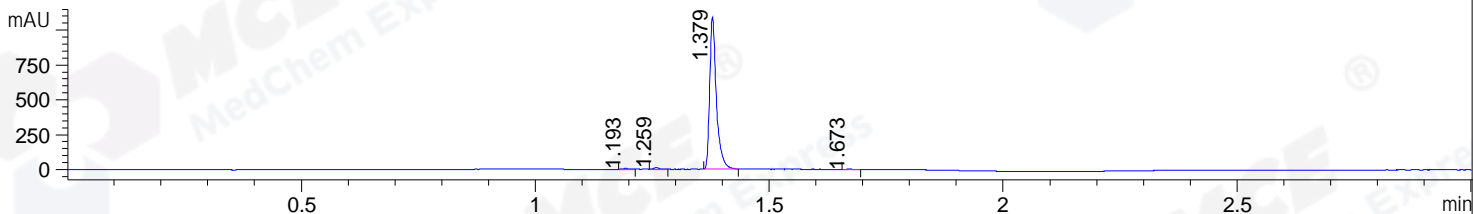
Gradient: 5% to 95%B within 1.3 min

Flow Rate :1.8ml/min

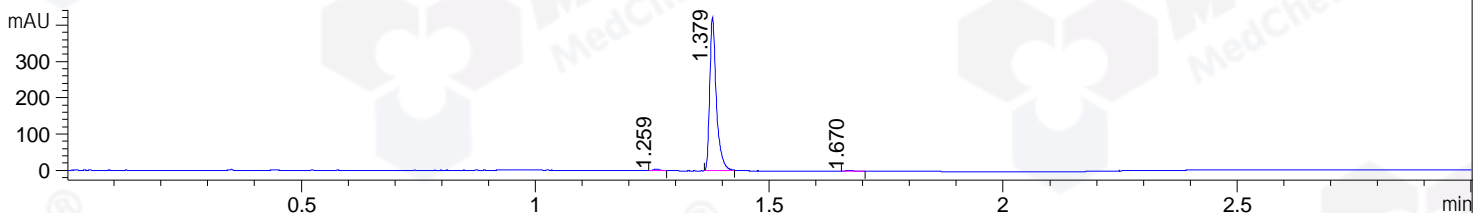
Column :SunFire C18, 4.6*50mm,3.5um A-RP-433

Oven Temperature : 45

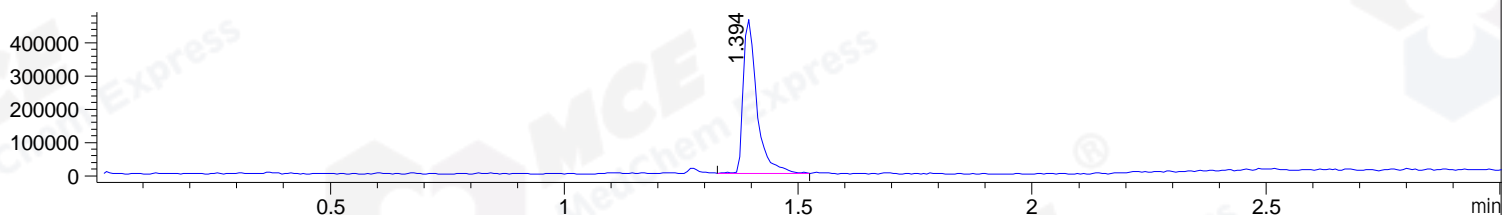
DAD1 B, Sig=214,4 Ref=off



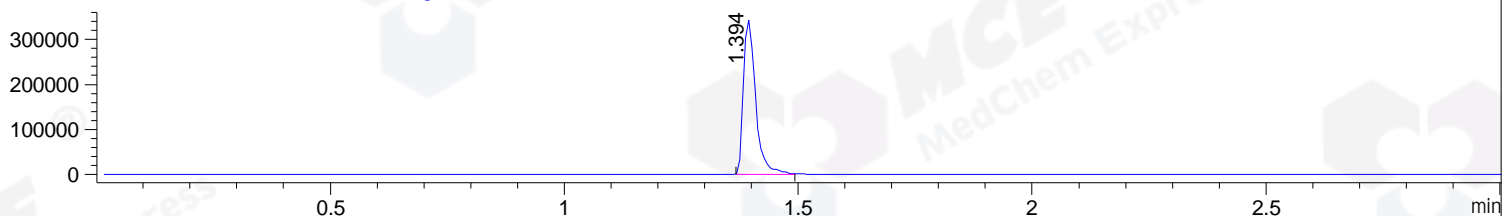
DAD1 C, Sig=254,4 Ref=off



MSD1 TIC, MS File ES-API, Pos, Scan, Frag: 70



Ion 291.3682, MSD1 291.3682, Target Mass 290.3682 +H Positive, EIC=291.07:292.07



Integration Results for DAD1 B, Sig=214,4 Ref=off

RetTim	Width	Area	Height	Area%	MS (+)
1.19	0.01	5.46	5.94	0.49	232
1.26	0.01	10.27	11.26	0.93	323
1.38	0.01	1087.35	1092.30	98.41	291
1.67	0.02	1.84	1.89	0.17	ND

Integration Results for DAD1 C, Sig=254,4 Ref=off

RetTim	Width	Area	Height	Area%	MS (+)
1.26	0.01	4.07	4.30	0.96	323
1.38	0.01	418.09	423.16	98.65	291
1.67	0.02	1.67	1.54	0.39	ND

Integration Results for MSD1 TIC, MS File

RetTim	Width	Area	Height	Area%	MS (+)
1.39	0.03	942825.25	463625.09	100.00	291

Ret. Time: 1.39

<<<< POSITIVE SPECTRA >>>>

ES-API Positive

