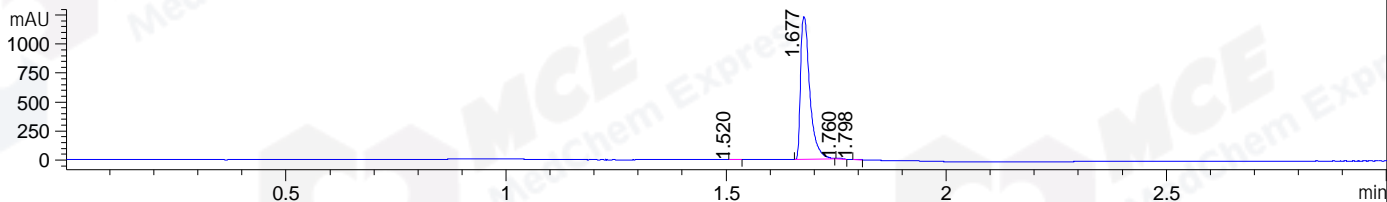
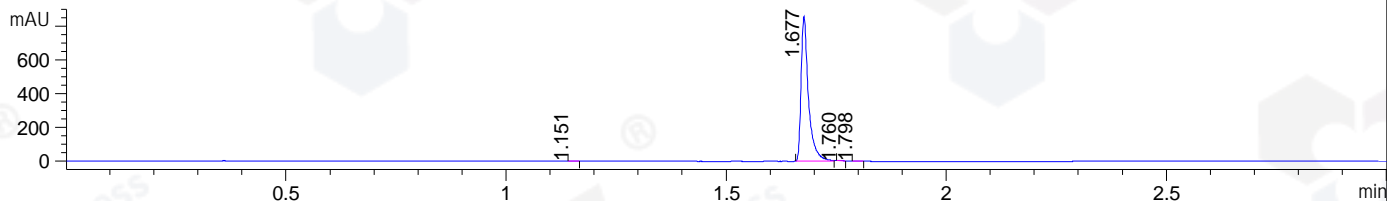


File ..\DATA\2019\20190509\567\CPK2019-506-21605.D Tgt Mass (CHM):
 Injection Date : 9 May 19 3:20 pm +0800 Seq. Line : 72
 Sample Name : CPK2019-506-21605 Location : P2-D-06
 Acq. Operator : LQ_1052 Inj : 1
 Spec. Reported : MS Integration Inj Volume : 1 ul
 Acq. Method : D:\Chem32\1\data\2019\20190509\567\1-POS-3MIN-1.M
 Analysis Method : D:\CHEM32\1\DATA\2019\20190509\567\1-POS-3MIN-1.M
 Catalog No : HY-100015 Batch#21605
 Method Info : Mobile Phase: A: water(0.01%TFA) B:ACN(0.01%TFA)
 Gradient: 5% to 95%B within 1.3 min
 Flow Rate :1.8ml/min
 Column :SunFire C18, 4.6*50mm,3.5um A-RP-322
 Oven Temperature : 45□

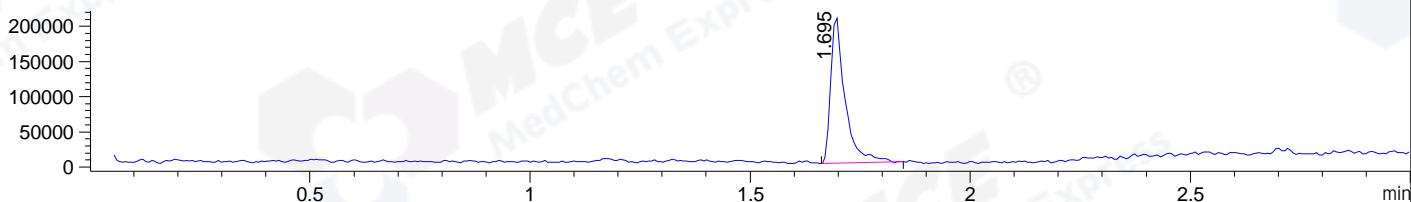
DAD1 B, Sig=214,4 Ref=off



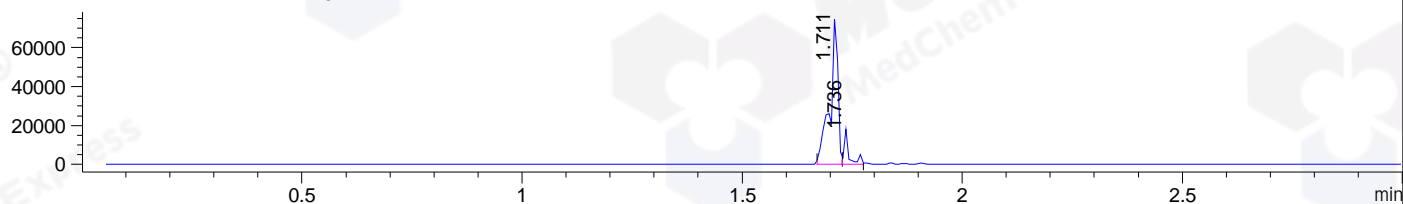
DAD1 C, Sig=254,4 Ref=off



MSD1 TIC, MS File ES-API, Pos, Scan, Frag: 70



Ion 460.5, MSD1 460.5, Target Mass 459.5 +H Positive, EIC=460.2:461.2



Integration Results for DAD1 B, Sig=214,4 Ref=off

RetTim	Width	Area	Height	Area%	MS (+)
1.52	0.02	1.18	1.17	0.07	130
1.68	0.02	1785.44	1232.54	99.61	460
1.76	0.01	3.89	5.08	0.22	460
1.80	0.01	2.00	2.84	0.11	460

Integration Results for DAD1 C, Sig=254,4 Ref=off

RetTim	Width	Area	Height	Area%	MS (+)
1.15	0.02	0.74	0.79	0.07	130
1.68	0.02	991.96	858.26	99.69	460
1.76	0.01	1.21	1.70	0.12	460
1.80	0.01	1.17	1.45	0.12	460

Integration Results for MSD1 TIC, MS File

RetTim	Width	Area	Height	Area%	MS (+)
1.69	0.03	471715.63	208630.47	100.00	460

Ret. Time: 1.69

<<<< POSITIVE SPECTRA >>>>

ES-API Positive

