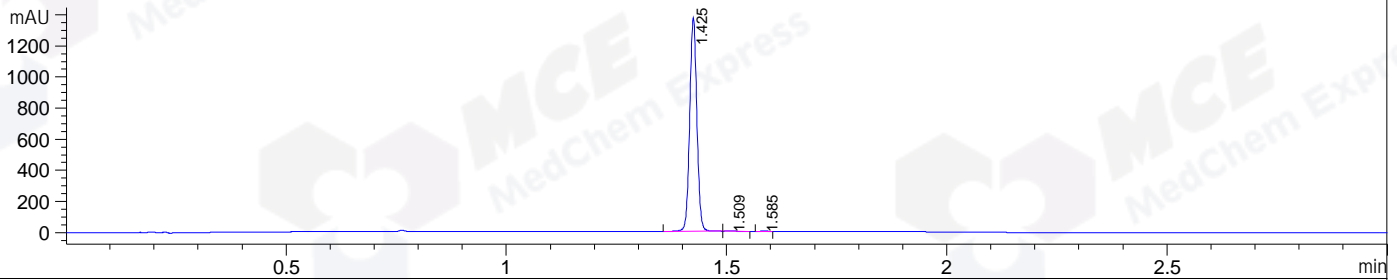
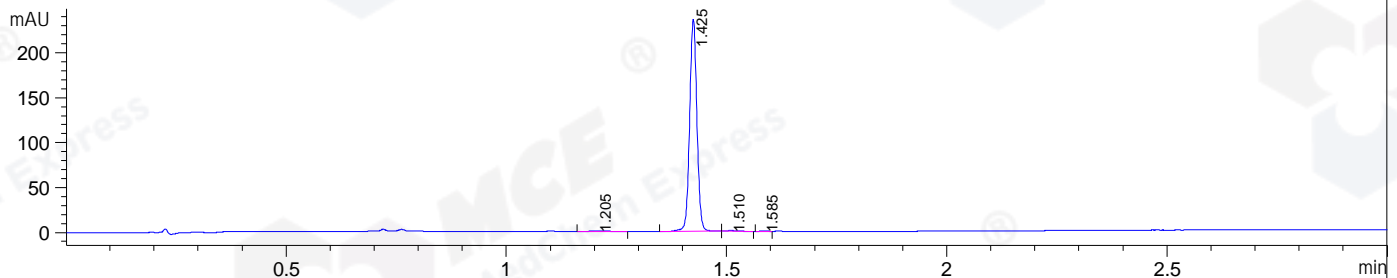


File E:\ChemStation\1\DATA\2024\2024-08\2024-08-12\CPK2024-812-25156-UPLC-MS-10-041641.D
 Injection Date : 12-Aug-24, 17:50:47 Tgt Mass(EZX) :
 Sample Name : CPK2024-812-25156 Location : P2-B-11
 Acq. Operator : LY_2278 Inj : 1
 Spec. Reported : MS Integration Inj Volume : 0.8 ul
 Acq. Method : E:\ChemStation\1\Methods\1-POS-UPLC3.0MIN(1.2)(150-1000).M
 Analysis Method : E:\CHEMSTATION\1\METHODS\1-POS-UPLC3.0MIN(1.2)(150-1000).M
 CAS NO. : 1799753-84-6 WalkUp method: '1-POS-3MIN' Project: CPK2024
 Method Info : Mobile Phase: A: water(0.01%TFA) B:ACN(0.01%TFA)
 Gradient: 5% to 95%B within 2.0 min
 Flow Rate :1.2ml/min
 Column :Shim-pack Scepter C18-120, 3.0*33mm,3um
 Oven Temperature : 45C

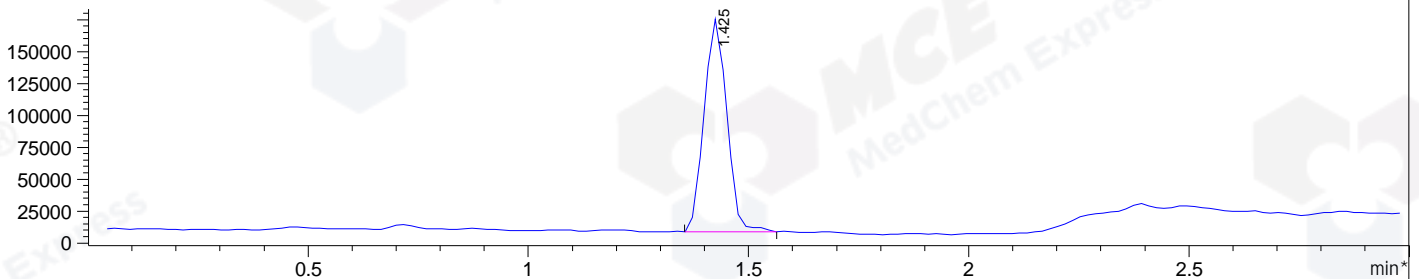
DAD1 A, Sig=214,4 Ref=off



DAD1 B, Sig=254,4 Ref=off



*MSD1 TIC, MS File ES-API, Pos, Scan, Frag: 70



Integration Results for DAD1 A, Sig=214,4 Ref=off

RetTim	Width	Area	Height	Area%
1.42	0.02	1554.88	1371.81	99.67
1.51	0.02	2.59	2.26	0.17
1.58	0.02	2.49	2.54	0.16

Integration Results for DAD1 B, Sig=254,4 Ref=off

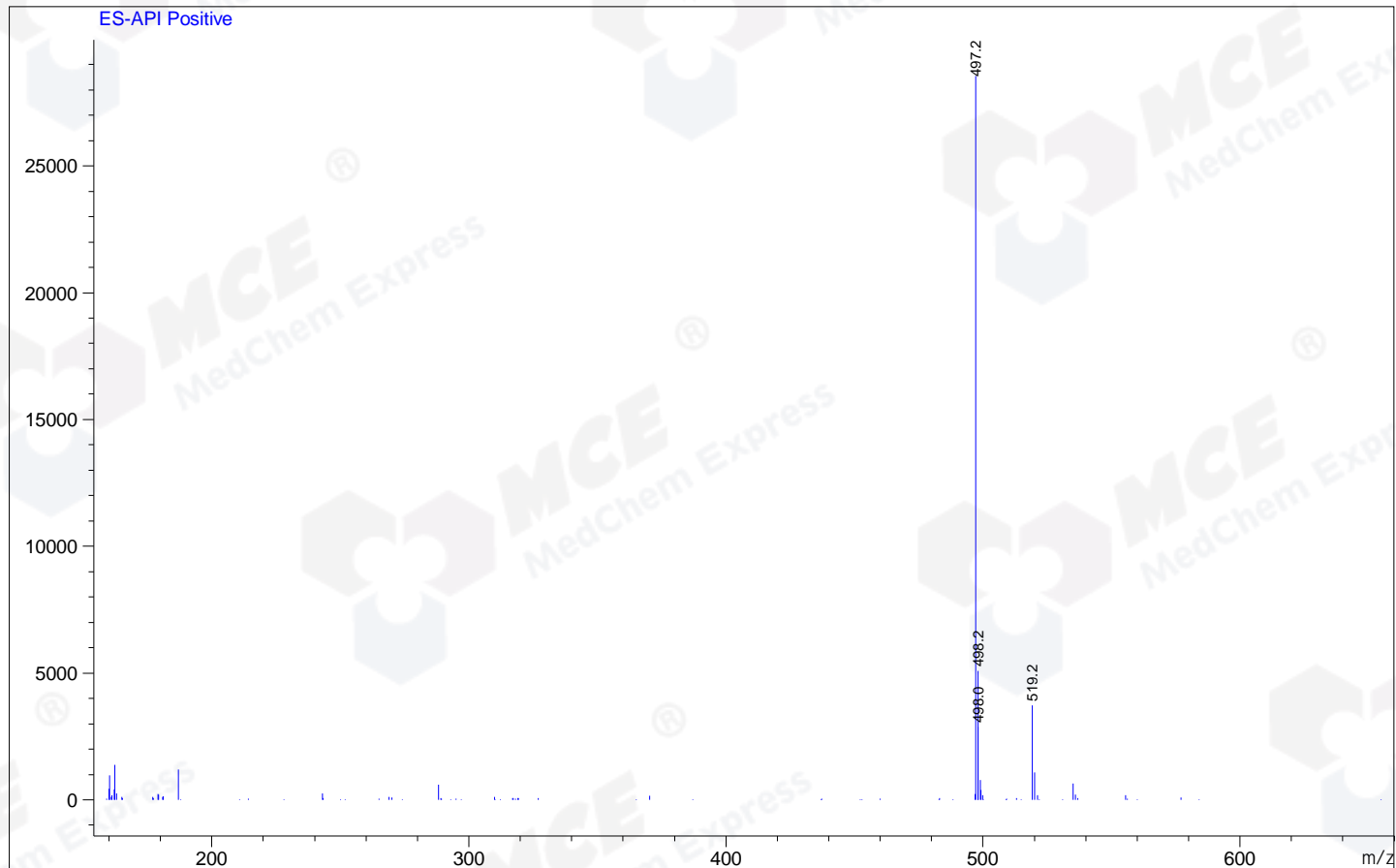
RetTim	Width	Area	Height	Area%
1.21	0.03	1.71	0.84	0.62
1.42	0.02	270.66	235.93	98.85
1.51	0.02	1.03	0.84	0.37
1.59	0.02	0.41	0.42	0.15

Integration Results for MSD1 TIC, MS File

RetTim	Width	Area	Height	Area%
1.42	0.06	596541.56	169435.50	100.00

Ret. Time: 1.42

<<<< POSITIVE SPECTRA >>>>



*** End of Report ***