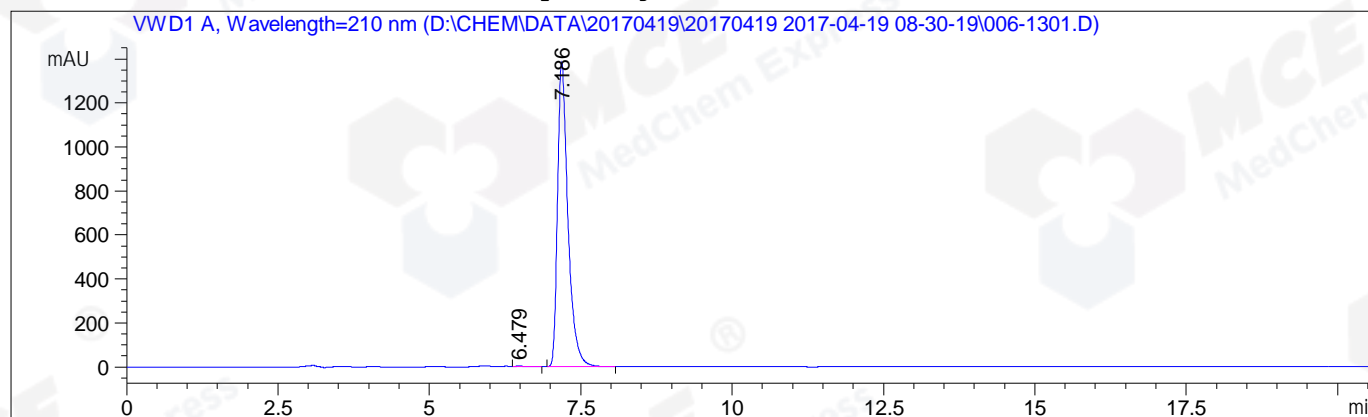


=====  
Acq. Operator : CWQ\_497 Seq. Line : 13  
Acq. Instrument : HPLC-04 Location : Vial 6  
Injection Date : 4/19/2017 12:28:10 PM Inj : 1  
Inj Volume : 5.0 µl  
Acq. Method : D:\CHEM\DATA\20170419\20170419 2017-04-19 08-30-19\AD,85-ETOH,210NM.M  
Last changed : 4/19/2017 12:48:51 PM by CWQ\_497  
(modified after loading)  
Analysis Method : D:\CHEM\METHODS\HY-218\_13, 220NM, C1-1.M  
Last changed : 4/19/2017 9:50:49 AM by CWQ\_497  
(modified after loading)  
Catalog No : HY-100029 Batch#24379  
C-NP-27

Additional Info : Peak(s) manually integrated



=====  
Area Percent Report  
=====

Sorted By : Signal  
Multiplier: : 1.0000  
Dilution: : 1.0000  
Use Multiplier & Dilution Factor with ISTDs

Signal 1: VWD1 A, Wavelength=210 nm

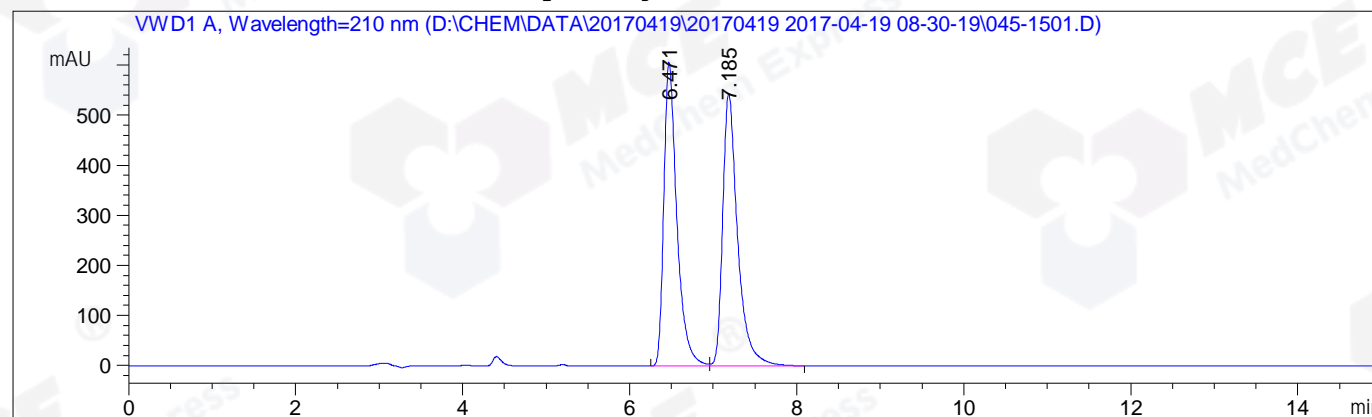
Peak #	RetTime [min]	Type	Width [min]	Area mAU*s	Height [mAU]	Area %
1	6.479	VB	0.1741	39.72255	3.19720	0.2394
2	7.186	BB	0.1789	1.65511e4	1382.93591	99.7606
Totals :				1.65908e4	1386.13312	

=====  
\*\*\* End of Report \*\*\*

```

=====
Acq. Operator   : CWQ_497                               Seq. Line : 15
Acq. Instrument : HPLC-04                               Location  : Vial 45
Injection Date  : 4/19/2017 1:05:58 PM                 Inj       : 1
                                                    Inj Volume: 5.0 µl
Acq. Method     : D:\CHEM\DATA\20170419\20170419 2017-04-19 08-30-19\AD,85-ETOH,210NM.M
Last changed    : 4/19/2017 12:48:51 PM by CWQ_497
                  (modified after loading)
Analysis Method : D:\CHEM\METHODS\HY-218_13, 220NM, C1-1.M
Last changed    : 4/19/2017 9:50:49 AM by CWQ_497
                  (modified after loading)
Catalog No     : HY-100029 Batch#24379
                  C-NP-27
    
```

Additional Info : Peak(s) manually integrated



Area Percent Report

```

Sorted By          :      Signal
Multiplier:        :      1.0000
Dilution:          :      1.0000
Use Multiplier & Dilution Factor with ISTDs
    
```

Signal 1: VWD1 A, Wavelength=210 nm

Peak #	RetTime [min]	Type	Width [min]	Area mAU*s	Height [mAU]	Area %
1	6.471	BV	0.1632	6589.84473	606.32275	49.3625
2	7.185	VB	0.1844	6760.05811	543.55463	50.6375
Totals :				1.33499e4	1149.87738	

\*\*\* End of Report \*\*\*