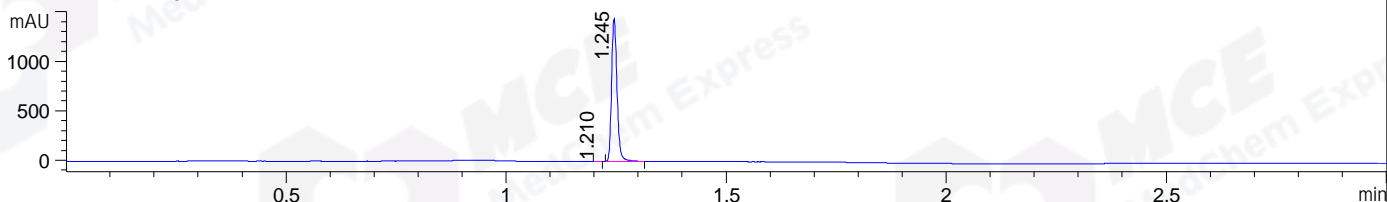
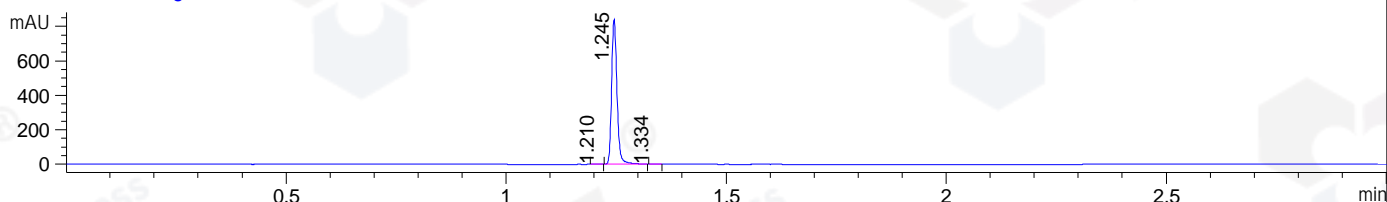


File ..DATA\2020\20201112\1151\CPK2020-N09-24030.D Tgt Mass (CHM):  
 Injection Date : 12 Nov 20 10:23 am +0800 Seq. Line : 10  
 Sample Name : CPK2020-N09-24030 Location : P1-C-09  
 Acq. Operator : zyj\_1547 Inj : 1  
 Spec. Reported : MS Integration Inj Volume : 0.5 ul  
 Acq. Method : D:\Chem32\1\data\2020\20201112\1151\1-POS-3MIN.M  
 Analysis Method : D:\CHEM32\1\DATA\2020\20201112\1151\1-POS-3MIN.M  
 CAS NO. : 131740-09-5  
 Method Info : Mobile Phase: A: water(0.01%TFA) B:ACN(0.01%TFA)  
 Gradient: 5% to 95%B within 1.3 min  
 Flow Rate :1.8ml/min  
 Column :SunFire C18, 4.6\*50mm,3.5um A-RP-698

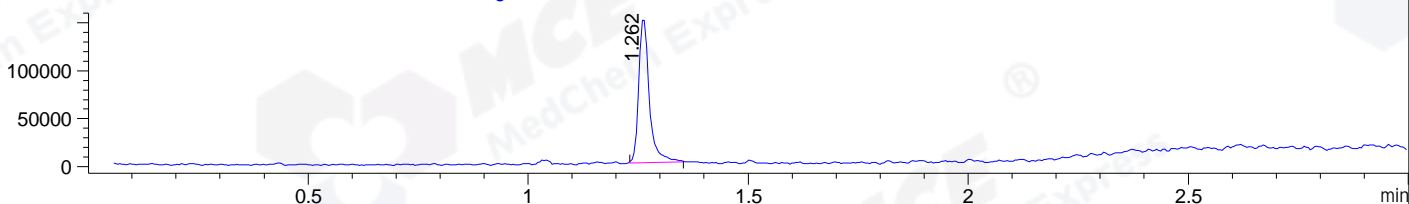
DAD1 B, Sig=214,4 Ref=off



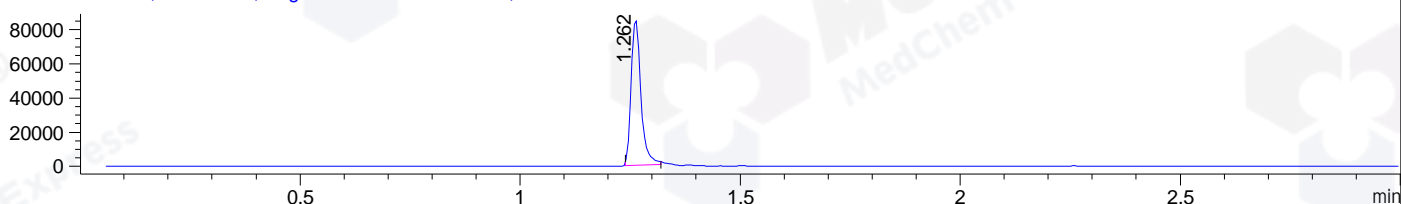
DAD1 C, Sig=254,4 Ref=off



MSD1 TIC, MS File ES-API, Pos, Scan, Frag: 70



Ion 402, MSD1 402, Target Mass 401 +H Positive, EIC=401.7:402.7



## Integration Results for DAD1 B, Sig=214,4 Ref=off

RetTim	Width	Area	Height	Area%	MS (+)
1.21	0.01	1.24	1.93	0.10	ND
1.25	0.01	1242.16	1447.25	99.90	402

## Integration Results for DAD1 C, Sig=254,4 Ref=off

RetTim	Width	Area	Height	Area%	MS (+)
1.21	0.01	0.94	1.20	0.13	ND
1.25	0.01	711.82	842.44	99.75	402
1.33	0.02	0.82	0.74	0.12	402

## Integration Results for MSD1 TIC, MS File

RetTim	Width	Area	Height	Area%	MS (+)
1.26	0.02	251429.53	152131.05	100.00	402

Ret. Time: 1.26

<<<< POSITIVE SPECTRA >>>>

ES-API Positive

