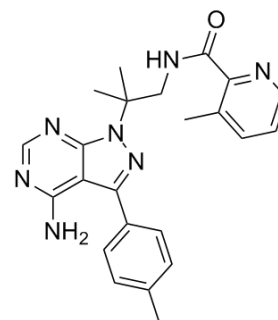


WEHI-345 analog

Cat. No.:	HY-100112		
CAS No.:	1354825-62-9		
Molecular Formula:	C ₂₃ H ₂₅ N ₇ O		
Molecular Weight:	415.49		
Target:	Src		
Pathway:	Protein Tyrosine Kinase/RTK		
Storage:	Powder	-20°C	3 years
		4°C	2 years
	In solvent	-80°C	6 months
		-20°C	1 month



SOLVENT & SOLUBILITY

In Vitro

DMSO : ≥ 30 mg/mL (72.20 mM)

* "≥" means soluble, but saturation unknown.

Preparing Stock Solutions	Solvent	Mass	1 mg	5 mg	10 mg
	Concentration				
	1 mM		2.4068 mL	12.0340 mL	24.0680 mL
	5 mM		0.4814 mL	2.4068 mL	4.8136 mL
	10 mM		0.2407 mL	1.2034 mL	2.4068 mL

Please refer to the solubility information to select the appropriate solvent.

BIOLOGICAL ACTIVITY

Description

WEHI-345 analog is a Src inhibitor, extracted from patent WO/2012003544A1, compound example 71. Target: Src. WEHI-345 (analog) is a protein kinase inhibitor. A family of proto-oncogenic TPKs referred to herein as SFKs (Src family kinases) have provided researchers with a better understanding of the mechanism of cancer as a disease state where normally healthy cellular signalling is disrupted.

REFERENCES

[1]. Jonathan Bayldon Baell, et al. Protein kinase inhibitors and methods of treatment. WO2012003544A1.

Caution: Product has not been fully validated for medical applications. For research use only.

Tel: 609-228-6898

Fax: 609-228-5909

E-mail: tech@MedChemExpress.com

Address: 1 Deer Park Dr, Suite Q, Monmouth Junction, NJ 08852, USA