

File ..\DATA\2019\20190327\569\CPK2019-327-20423.D Tgt Mass (CHM):

Injection Date : 27 Mar 19 5:18 pm +0800 Seq. Line : 19

Sample Name : CPK2019-327-20423 Location : P2-B-09

Acq. Operator : LQ\_1052 Inj : 1

Spec. Reported : MS Integration Inj Volume : 1 ul

Acq. Method : D:\Chem32\1\data\2019\20190327\569\1-POS-3MIN-1.M

Analysis Method : D:\CHEM32\1\DATA\2019\20190327\569\1-POS-3MIN-1.M

Catalog No : HY-100112 Batch#20423

Method Info : Mobile Phase: A: water(0.01%TFA) B:ACN(0.01%TFA)

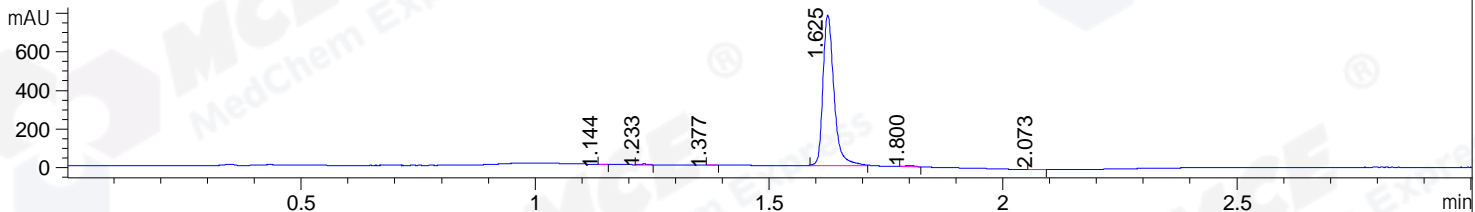
Gradient: 5% to 95%B within 1.3 min

Flow Rate :1.8ml/min

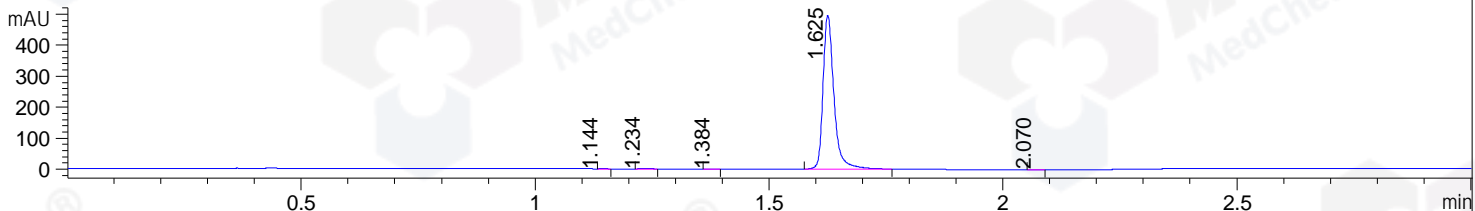
Column :SunFire C18, 4.6\*50mm,3.5um A-RP-314

Oven Temperature : 45

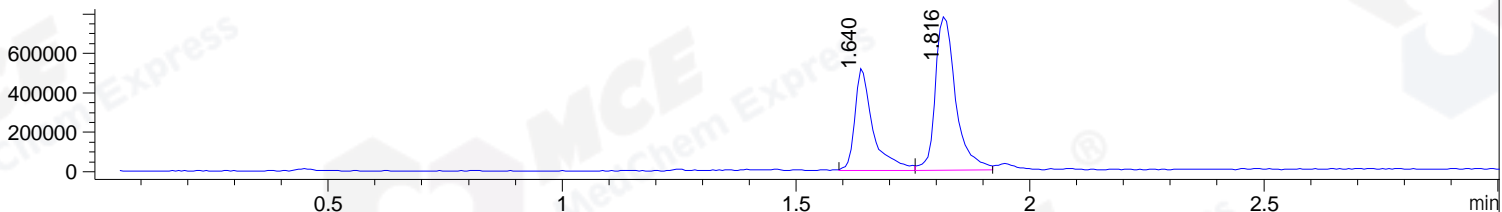
DAD1 B, Sig=214,4 Ref=off



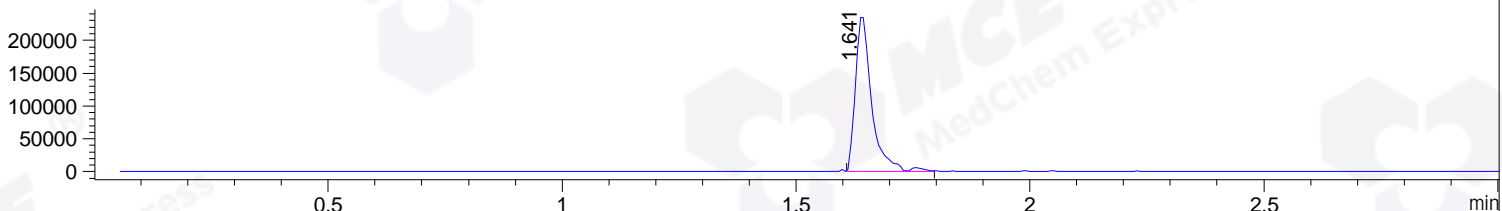
DAD1 C, Sig=254,4 Ref=off



MSD1 TIC, MS File ES-API, Pos, Scan, Frag: 70



Ion 416.5, MSD1 416.5, Target Mass 415.5 +H Positive, EIC=416.2:417.2



Integration Results for DAD1 B, Sig=214,4 Ref=off

RetTim	Width	Area	Height	Area%	MS (+)
1.14	0.02	0.95	0.92	0.07	142
1.23	0.02	5.30	4.16	0.41	297
1.38	0.02	0.98	0.92	0.08	142
1.63	0.03	1287.11	780.45	98.62	416
1.80	0.02	9.01	6.21	0.69	225
2.07	0.02	1.81	1.30	0.14	142

Integration Results for DAD1 C, Sig=254,4 Ref=off

RetTim	Width	Area	Height	Area%	MS (+)
1.14	0.02	0.39	0.42	0.05	142
1.23	0.02	2.95	2.32	0.36	297
1.38	0.02	0.47	0.38	0.06	142
1.63	0.03	805.50	496.73	99.47	416
2.07	0.02	0.46	0.34	0.06	142

Integration Results for MSD1 TIC, MS File

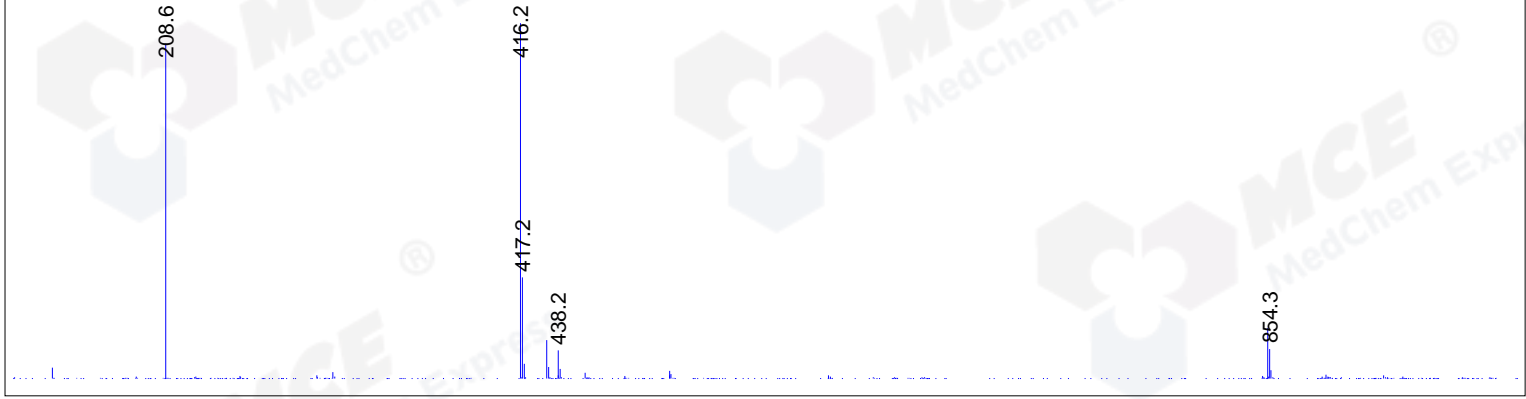
1.64	0.04	1394768.50	520124.97	37.16	416
1.82	0.05	2358539.25	780286.13	62.84	225

RetTim	Width	Area	Height	Area%	MS (+)
--------	-------	------	--------	-------	--------

Ret. Time: 1.64

<<<< POSITIVE SPECTRA >>>>

ES-API Positive



Ret. Time: 1.82

ES-API Positive

