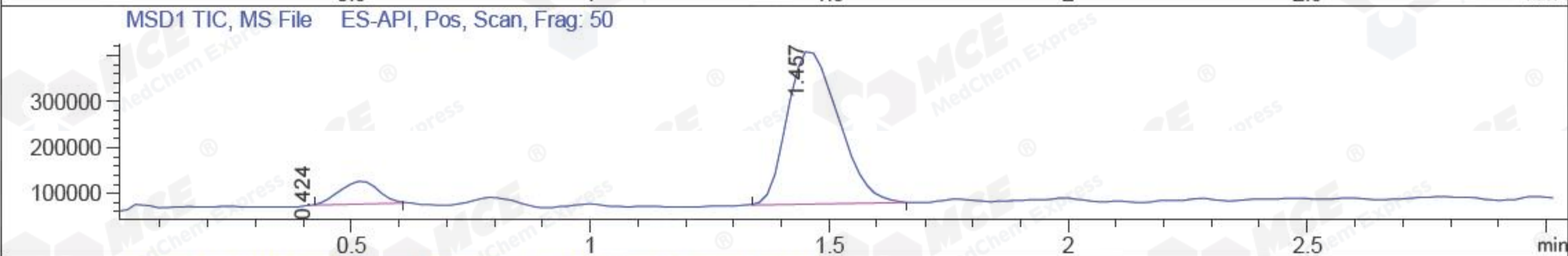
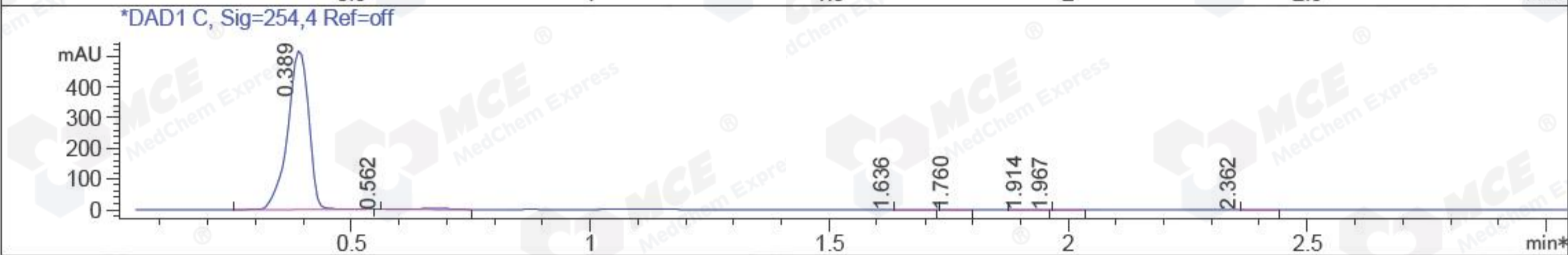
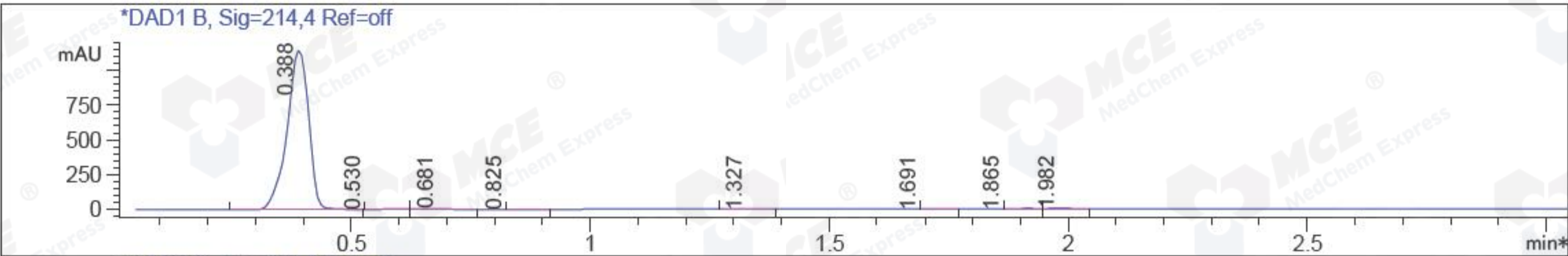


File D:\CHEM32\1\DATA\BIZ\BIZ2017-505-WJ7-1.D Tgt Mass (EZ): 266.10  
 Injection Date : 5 May 17 12:46 pm +0800 Seq. Line : 0  
 Sample Name : BIZ2017-505-WJ7-1 Location : P1-A-03  
 Acq. Operator : CLJ\_701 Inj : 1  
 Spec. Reported : MS Integration Inj Volume : 3 ul  
 Acq. Method : D:\Chem32\1\METHODS\1-POS-3MIN(5-50A) (50-1000) .M  
 Analysis Method : D:\CHEM32\1\METHODS\1-POS-3MIN-PROSRSS.M  
 Catalog No: HY-100126 Batch#24529 Easy-Access Method: '1-POS-3MIN(5-50A) (50-1000)' 266.10  
 Method Info : Mobile Phase: A: water(0.01%TFA) B:ACN(0.01%TFA)  
 Gradient: 5% to 95%B within 1.3 min  
 Flow Rate :1.8ml/min  
 Column :SunFire C18, 4.6\*50mm,3.5um A-RP-186  
 Oven Temperature : 45C



Integration Results for DAD1 B, Sig=214,4 Ref=off

RetTim	Width	Area	Height	Area%	MS (+)
0.39	0.05	3579.74	1149.24	97.01	83
0.53	0.06	25.94	0.05	0.70	83
0.68	0.07	37.58	8.42	1.02	83
0.82	0.04	5.32	0.04	0.14	83
1.33	0.07	4.51	1.13	0.12	83
1.69	0.04	1.74	0.02	0.05	83
1.86	0.05	12.21	0.10	0.33	83
1.98	0.05	23.06	8.11	0.62	83

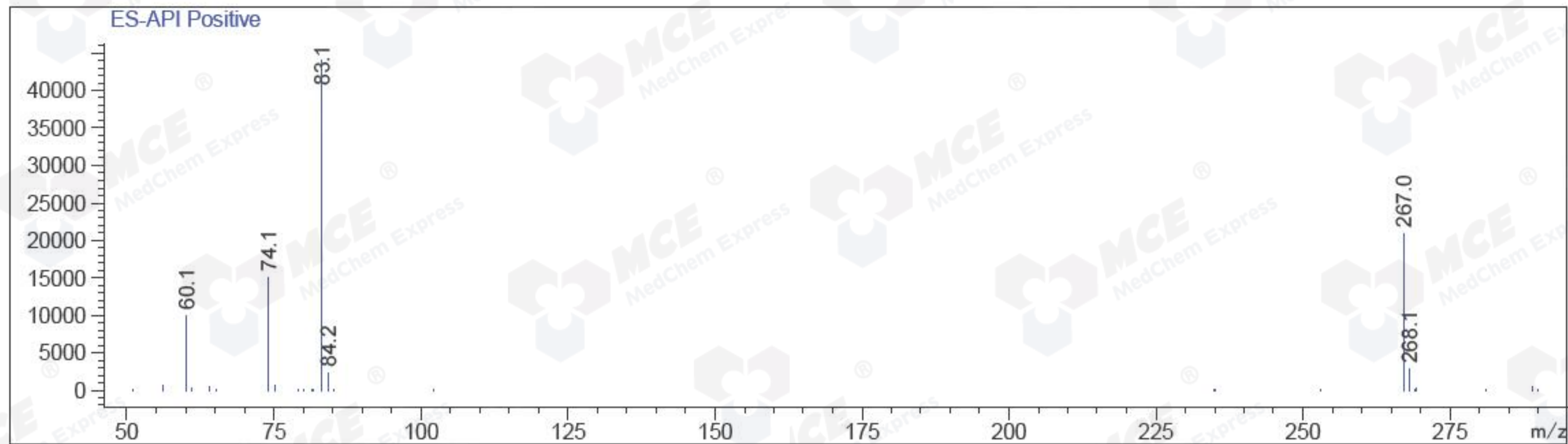
Integration Results for DAD1 C, Sig=254,4 Ref=off

RetTim	Width	Area	Height	Area%	MS (+)
0.39	0.05	1587.60	523.15	98.68	83
0.56	0.08	16.61	-0.02	1.03	83
1.64	0.06	1.48	0.09	0.09	83
1.76	0.04	0.57	0.24	0.04	83
1.91	0.05	1.03	0.38	0.06	83
1.97	0.05	0.47	0.03	0.03	83

2.36 0.05 1.14 0.06 0.07 83

Ret. Time: 0.42

<<<< POSITIVE SPECTRA >>>>



Ret. Time: 1.46

