

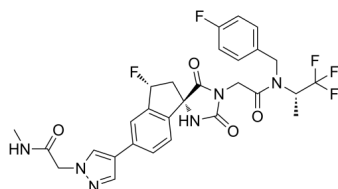
CBP/p300-IN-5

Cat. No.: HY-100132
Batch No.: 392221
CAS No.: 1889284-33-6
Molecular Formula: C₂₉H₂₇F₅N₆O₄

ANALYTICAL DATA

Theoretical: C(55.50%)、H(4.50%)、N(13.39%)
Result: C(55.36%)、H(4.47%)、N(13.38%)

Chemical Structure:



Caution: Product has not been fully validated for medical applications. For research use only.

Tel: 609-228-6898

Fax: 609-228-5909

E-mail: tech@MedChemExpress.com

Address: 1 Deer Park Dr, Suite Q, Monmouth Junction, NJ 08852, USA