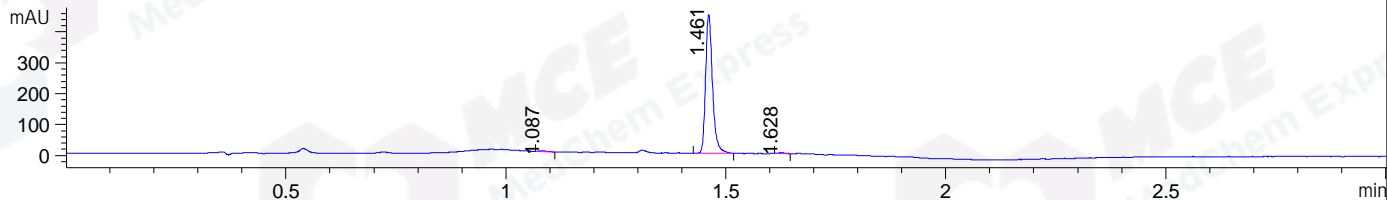
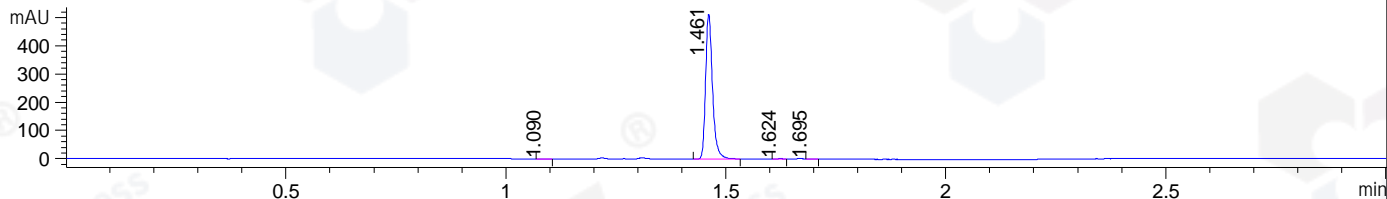


File ..\DATA\2020\20200324\891\CPK2020-323-01743.D Tgt Mass (CHM):  
 Injection Date : 24 Mar 20 9:46 pm +0800 Seq. Line : 45  
 Sample Name : CPK2020-323-01743 Location : P1-D-08  
 Acq. Operator : ZJ\_1432 Inj : 1  
 Spec. Reported : MS Integration Inj Volume : 0.5 ul  
 Acq. Method : D:\Chem32\1\data\2020\20200324\891\1-POS-3MIN.M  
 Analysis Method : D:\CHEM32\1\DATA\2020\20200324\891\1-POS-3MIN.M  
 Catalog No : HY-10014 Batch# 01743  
 Method Info : Mobile Phase: A: water(0.01%TFA) B:ACN(0.01%TFA)  
 Gradient: 5% to 95%B within 1.3 min  
 Flow Rate :1.8ml/min  
 Column :SunFire C18, 4.6\*50mm,3.5um A-RP-433  
 Oven Temperature : 45

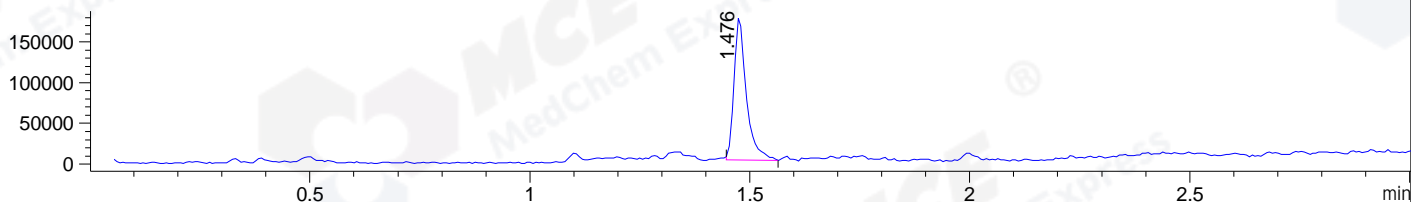
DAD1 B, Sig=214,4 Ref=off



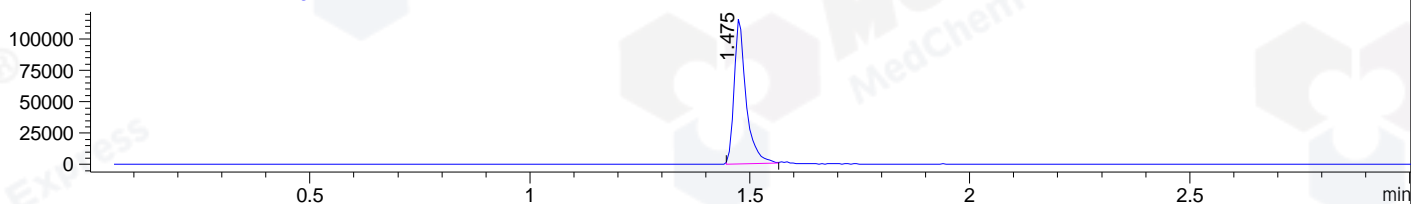
DAD1 C, Sig=254,4 Ref=off



MSD1 TIC, MS File ES-API, Pos, Scan, Frag: 70



Ion 442, MSD1 442, Target Mass 441 +H Positive, EIC=441.7:442.7



Integration Results for DAD1 B, Sig=214,4 Ref=off

RetTim	Width	Area	Height	Area%	MS (+)
1.09	0.02	2.40	1.75	0.49	196
1.46	0.02	488.67	449.76	99.04	442
1.63	0.02	2.32	2.36	0.47	ND

Integration Results for DAD1 C, Sig=254,4 Ref=off

RetTim	Width	Area	Height	Area%	MS (+)
1.09	0.02	0.73	0.77	0.13	196
1.46	0.02	558.33	514.07	99.66	442
1.62	0.02	0.92	0.98	0.16	ND
1.69	0.01	0.24	0.35	0.04	ND

Integration Results for MSD1 TIC, MS File

RetTim	Width	Area	Height	Area%	MS (+)
1.48	0.03	344540.28	177554.16	100.00	442

Ret. Time: 1.48

<<<< POSITIVE SPECTRA >>>>

ES-API Positive

