

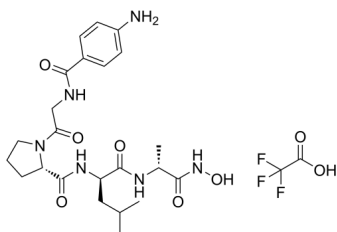
FN-439 (TFA)

Cat. No.: HY-100210A
Batch No.: 286730
Molecular Formula: C₂₅H₃₅F₃N₆O₈

ANALYTICAL DATA

Theoretical: C(-), H(-), N(-), Peptide Content(≥60.0%)
Result: C(46.16%), H(6.73%), N(12.86%), Peptide Content(75.10%)

Chemical Structure:



Caution: Product has not been fully validated for medical applications. For research use only.

Tel: 609-228-6898

Fax: 609-228-5909

E-mail: tech@MedChemExpress.com

Address: 1 Deer Park Dr, Suite Q, Monmouth Junction, NJ 08852, USA