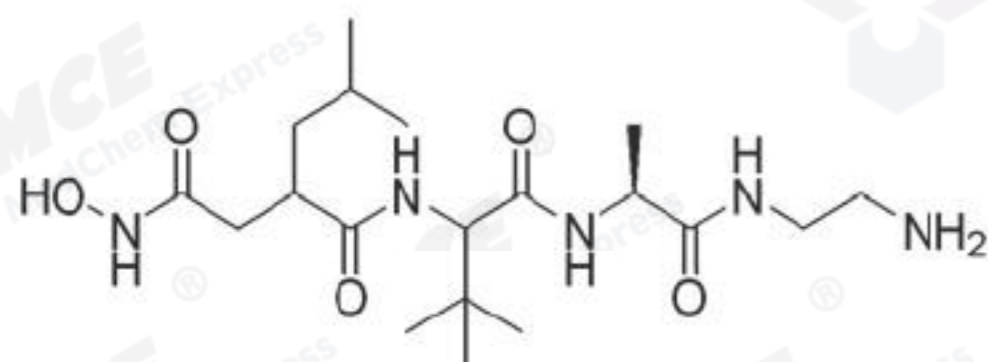


10.536

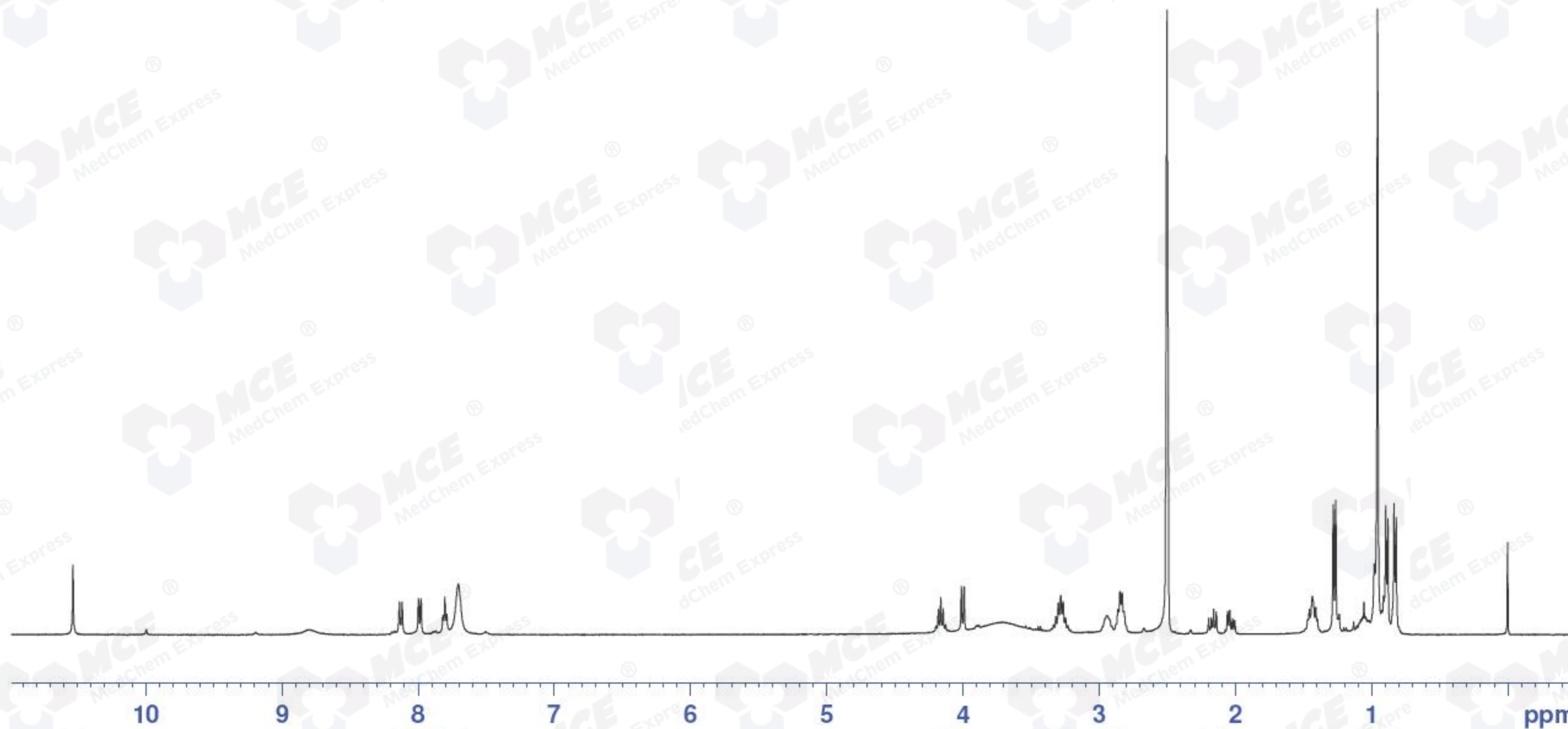
8.139
8.119
7.998
7.981
7.819
7.805
7.790
7.705

4.181
4.163
4.146
4.012
3.992
3.317
3.300
3.282
3.264
3.247
2.941
2.862
2.846
2.832
2.817
2.501
2.196
2.176
2.159
2.139
2.056
2.040
2.020
2.003
1.468
1.456
1.433
1.409
1.398
1.280
1.262
1.073
1.065
0.979
0.955
0.895
0.879
0.833
0.818

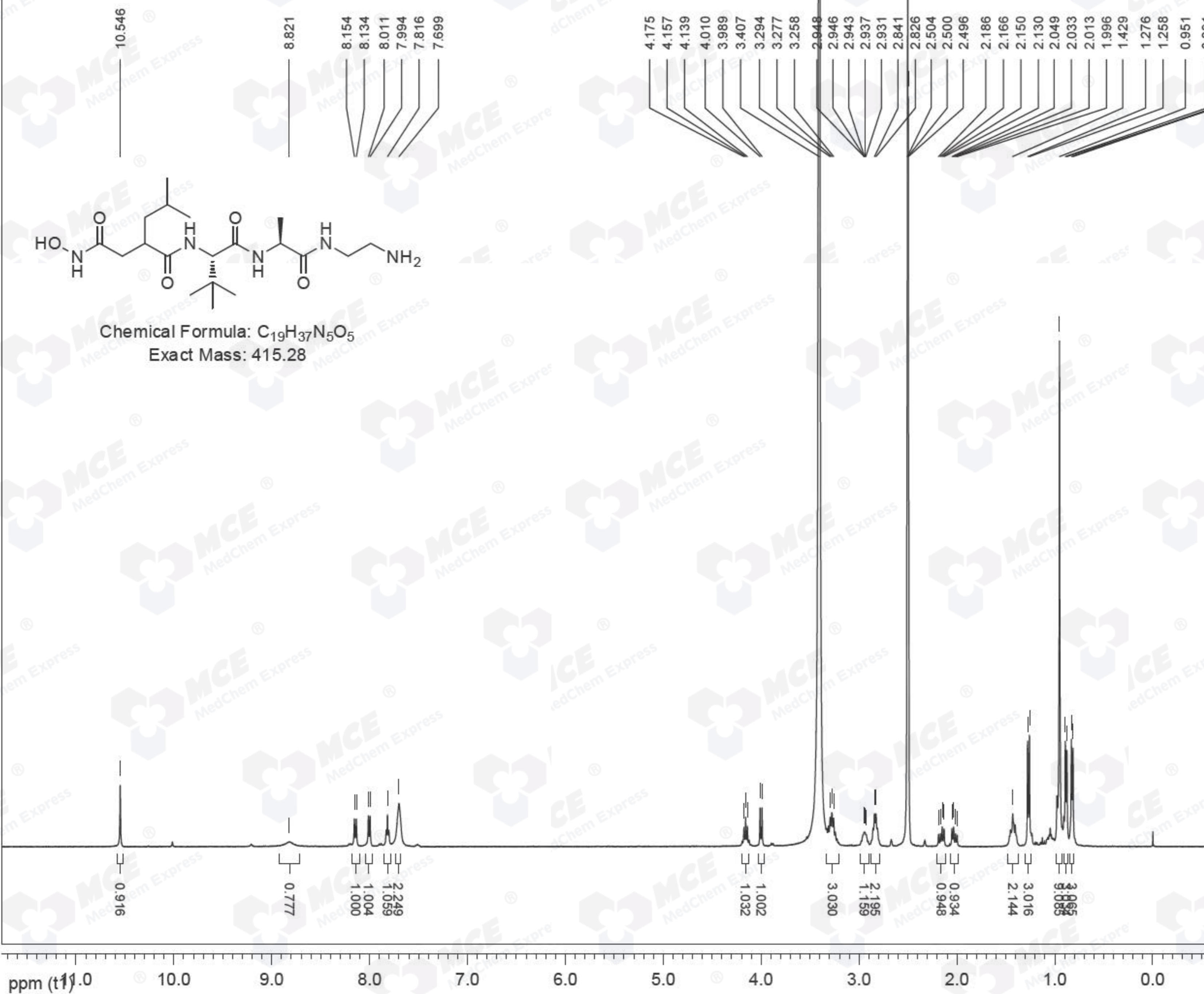


Catalog No HY-100211 Batch#23016
 EXPNO 1
 PROCNO 1
 Date_ 20161219
 Time 9.50
 INSTRUM spect
 PROBHD 5 mm PABBO BB/
 PULPROG zg30
 TD 65536
 SOLVENT DMSO
 NS 16
 DS 2
 SWH 8012.820 Hz
 FIDRES 0.122266 Hz
 AQ 4.0894966 sec
 RG 111.27
 DW 62.400 usec
 DE 6.50 usec
 TE 298.0 K
 D1 1.00000000 sec
 TD0 1

==== CHANNEL f1 =====
 SFO1 400.1324710 MHz
 NUC1 1H
 P1 8.04 usec
 SI 65536
 SF 400.1319033 MHz
 WDW EM
 SSB 0
 LB 0.30 Hz
 GB 0
 PC 1.00



Sample ID: BIZ2016-D26-WJ6, Catalog No: HY-100211 Batch#23016, DMSO



Date:

26 Dec 2016

Document's Title:

Catalog No: HY-100211 Batch#23016

Spectrum Title:

HY_BIZ2016-D26-WJ6-DMSO

Frequency (MHz):

(f1) 399.738

Original Points Count:

(f1) 65536

Actual Points Count:

(f1) 65536

Acquisition Time (sec):

(f1) 8.1789

Spectral Width (ppm):

(f1) 20.045

Pulse Program:

Unknown