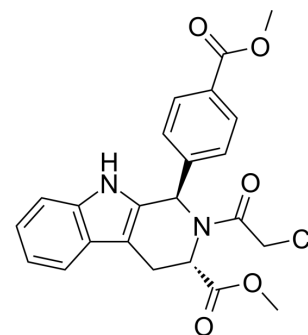


(1R,3S)-RSL3

Cat. No.:	HY-100218B
CAS No.:	1219810-13-5
Molecular Formula:	C ₂₃ H ₂₁ ClN ₂ O ₅
Molecular Weight:	440.88
Target:	Others
Pathway:	Others
Storage:	Please store the product under the recommended conditions in the Certificate of Analysis.



BIOLOGICAL ACTIVITY

Description	(1R,3S)-RSL3 is the less active (1R,3S)-enantiomer of RSL3 ((1S,3R)-RSL3). (1R,3S)-RSL3 and RSL3 induce cell death in HT22 wild-type cells with EC ₅₀ values of 5.2 μM and 0.004 μM, respectively ^[1] .								
In Vitro	<p>(1R,3S)-RSL3 (0.1 nM-100 μM; 16 h) induces cell death in HT22 wild-type (WT) and HT22 Bid CRISPR KO cells with EC₅₀ values of 5.2 μM and 28.8 μM, respectively^[1].</p> <p>MCE has not independently confirmed the accuracy of these methods. They are for reference only.</p> <p>Cell Viability Assay^[1]</p> <table border="1"> <tr> <td>Cell Line:</td> <td>HT22 WT and HT22 Bid CRISPR KO cells</td> </tr> <tr> <td>Concentration:</td> <td>0.1 nM-100 μM</td> </tr> <tr> <td>Incubation Time:</td> <td>16 h</td> </tr> <tr> <td>Result:</td> <td>Inhibited cells growth.</td> </tr> </table>	Cell Line:	HT22 WT and HT22 Bid CRISPR KO cells	Concentration:	0.1 nM-100 μM	Incubation Time:	16 h	Result:	Inhibited cells growth.
Cell Line:	HT22 WT and HT22 Bid CRISPR KO cells								
Concentration:	0.1 nM-100 μM								
Incubation Time:	16 h								
Result:	Inhibited cells growth.								

REFERENCES

[1]. Shin D, et al. Nrf2 inhibition reverses resistance to GPX4 inhibitor-induced ferroptosis in head and neck cancer. *Free Radic Biol Med*. 2018 Dec;129:454-462.

Caution: Product has not been fully validated for medical applications. For research use only.

Tel: 609-228-6898

Fax: 609-228-5909

E-mail: tech@MedChemExpress.com

Address: 1 Deer Park Dr, Suite Q, Monmouth Junction, NJ 08852, USA