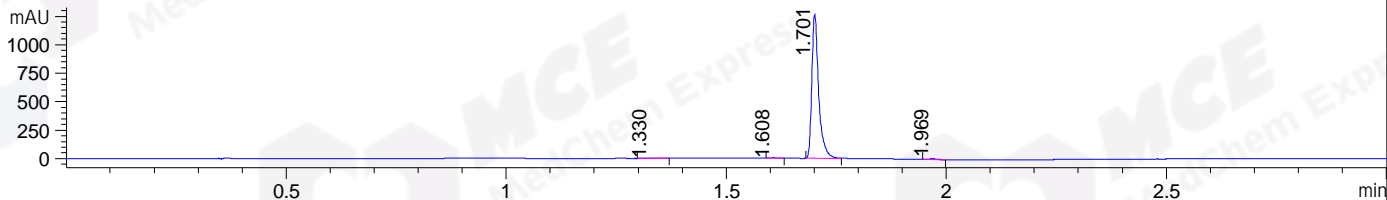
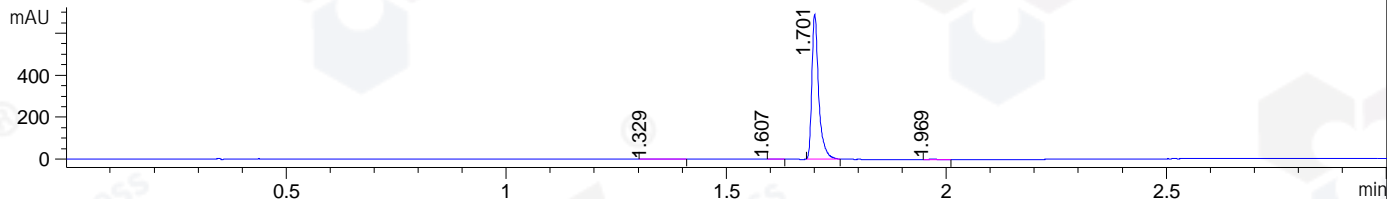


File ..\DATA\2019\20190614\593\CPK2019-613-22926.D Tgt Mass (CHM):  
 Injection Date : 14 Jun 19 1:40 pm +0800 Seq. Line : 62  
 Sample Name : CPK2019-613-22926 Location : P2-F-03  
 Acq. Operator : ZJ\_1432 Inj : 1  
 Spec. Reported : MS Integration Inj Volume : 1 ul  
 Acq. Method : D:\Chem32\1\data\2019\20190614\593\1-POS-3MIN.M  
 Analysis Method : D:\CHEM32\1\DATA\2019\20190614\593\1-POS-3MIN.M  
 Catalog No : HY-100222 Batch#22926  
 Method Info : Mobile Phase: A: water(0.01%TFA) B:ACN(0.01%TFA)  
 Gradient: 5% to 95%B within 1.3 min  
 Flow Rate :1.8ml/min  
 Column :SunFire C18, 4.6\*50mm,3.5um A-RP-433  
 Oven Temperature : 45□

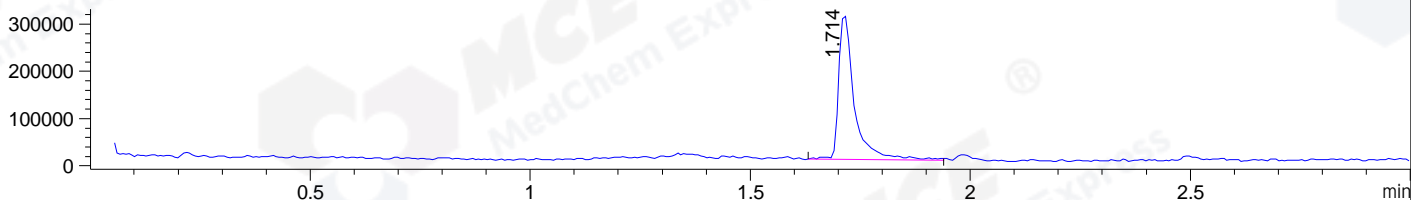
DAD1 B, Sig=214,4 Ref=off



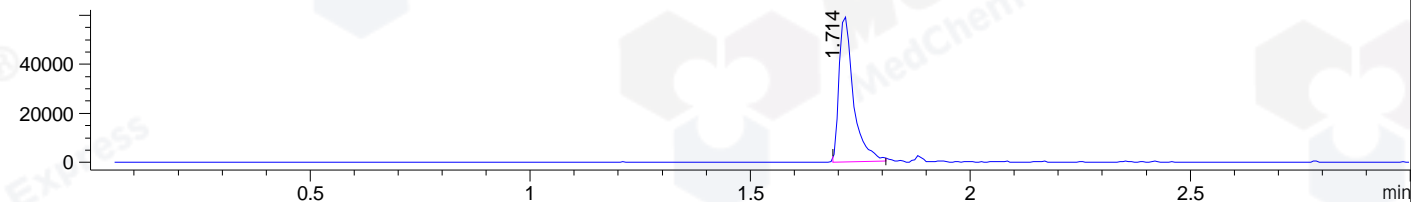
DAD1 C, Sig=254,4 Ref=off



MSD1 TIC, MS File ES-API, Pos, Scan, Frag: 70



Ion 460.5715, MSD1 460.5715, Target Mass 459.5715 +H Positive, EIC=460.27:461.27



## Integration Results for DAD1 B, Sig=214,4 Ref=off

RetTim	Width	Area	Height	Area%	MS (+)
1.33	0.04	9.91	4.08	0.71	157
1.61	0.02	5.47	5.51	0.39	157
1.70	0.02	1369.51	1263.54	98.26	460
1.97	0.02	8.85	7.87	0.63	157

## Integration Results for DAD1 C, Sig=254,4 Ref=off

RetTim	Width	Area	Height	Area%	MS (+)
1.33	0.05	4.99	1.64	0.66	157
1.61	0.02	2.14	2.36	0.28	157
1.70	0.02	743.67	690.57	98.43	460
1.97	0.02	4.70	4.08	0.62	157

## Integration Results for MSD1 TIC, MS File

RetTim	Width	Area	Height	Area%	MS (+)
1.71	0.04	764740.75	308128.78	100.00	460

Ret. Time: 1.71

<<<< POSITIVE SPECTRA >>>>

ES-API Positive

