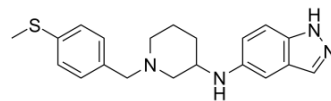


Rho-Kinase-IN-1

| | | | |
|---------------------------|---|-------|----------|
| Cat. No.: | HY-100270 | | |
| CAS No.: | 1035094-83-7 | | |
| Molecular Formula: | C ₂₀ H ₂₄ N ₄ S | | |
| Molecular Weight: | 352.5 | | |
| Target: | ROCK | | |
| Pathway: | Cell Cycle/DNA Damage; Cytoskeleton; Stem Cell/Wnt; TGF-beta/Smad | | |
| Storage: | Powder | -20°C | 3 years |
| | | 4°C | 2 years |
| | In solvent | -80°C | 6 months |
| | | -20°C | 1 month |



SOLVENT & SOLUBILITY

In Vitro

DMSO : 50 mg/mL (141.84 mM; ultrasonic and warming and heat to 60°C)

| Concentration | Solvent | Mass | 1 mg | 5 mg | 10 mg |
|---------------|---------|------|-----------|------------|------------|
| | | | 1 mg | 5 mg | 10 mg |
| 1 mM | | | 2.8369 mL | 14.1844 mL | 28.3688 mL |
| 5 mM | | | 0.5674 mL | 2.8369 mL | 5.6738 mL |
| 10 mM | | | 0.2837 mL | 1.4184 mL | 2.8369 mL |

Please refer to the solubility information to select the appropriate solvent.

In Vivo

- Add each solvent one by one: 10% DMSO >> 40% PEG300 >> 5% Tween-80 >> 45% saline
Solubility: ≥ 2.08 mg/mL (5.90 mM); Clear solution
- Add each solvent one by one: 10% DMSO >> 90% (20% SBE-β-CD in saline)
Solubility: ≥ 2.08 mg/mL (5.90 mM); Clear solution
- Add each solvent one by one: 10% DMSO >> 90% corn oil
Solubility: ≥ 2.08 mg/mL (5.90 mM); Clear solution

BIOLOGICAL ACTIVITY

Description

Rho-Kinase-IN-1 is a Rho kinase (ROCK) inhibitor (K_i values of 30.5 and 3.9 nM for ROCK1 and ROCK2, respectively) extracted from US20090325960A1, compound 1.008^[1].

IC₅₀ & Target

| ROCK1 | ROCK2 |
|---------------------------|--------------------------|
| 30.5 nM (K _i) | 3.9 nM (K _i) |

In Vitro

Rho-Kinase-IN-1 is a ROCK inhibitor which can be useful for treating diseases or conditions associated with excessive cell

proliferation, remodeling, edema and inflammation^[1].

MCE has not independently confirmed the accuracy of these methods. They are for reference only.

REFERENCES

[1]. Fulcher, Emilee H, et al. Method for the treatment and prevention of the inflammatory diseases using Rho kinase inhibiting compounds. US 20090325960 A1.

Caution: Product has not been fully validated for medical applications. For research use only.

Tel: 609-228-6898

Fax: 609-228-5909

E-mail: tech@MedChemExpress.com

Address: 1 Deer Park Dr, Suite Q, Monmouth Junction, NJ 08852, USA