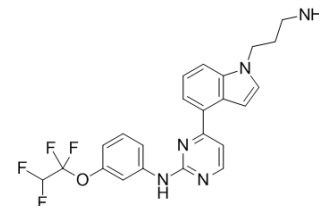


## BCR-ABL-IN-1

Cat. No.:	HY-100314
CAS No.:	188260-50-6
Molecular Formula:	C <sub>23</sub> H <sub>21</sub> F <sub>4</sub> N <sub>5</sub> O
Molecular Weight:	459.44
Target:	Bcr-Abl
Pathway:	Protein Tyrosine Kinase/RTK
Storage:	Please store the product under the recommended conditions in the COA.



### BIOLOGICAL ACTIVITY

Description	BCR-ABL-IN-1 is an inhibitor of BCR-ABL tyrosine kinase, with a pIC <sub>50</sub> of 6.46, and may be used in the research of chronic myelogenous leukemia.
IC <sub>50</sub> & Target	pIC <sub>50</sub> : 6.46 (BCR-ABL) <sup>[1]</sup>
In Vitro	BCR-ABL-IN-1 (Compound 21) is an inhibitor of BCR-ABL tyrosine kinase, with a pIC <sub>50</sub> of 6.46, and may be used in the research of chronic myelogenous leukemia.

### REFERENCES

[1]. Cui J1, et al. BCR-ABL tyrosine kinase inhibitor pharmacophore model derived from a series of phenylaminopyrimidine-based (PAP) derivatives. Bioorg Med Chem Lett. 2013 Apr 15;23(8):2442-50.

**Caution: Product has not been fully validated for medical applications. For research use only.**

Tel: 609-228-6898

Fax: 609-228-5909

E-mail: tech@MedChemExpress.com

Address: 1 Deer Park Dr, Suite Q, Monmouth Junction, NJ 08852, USA