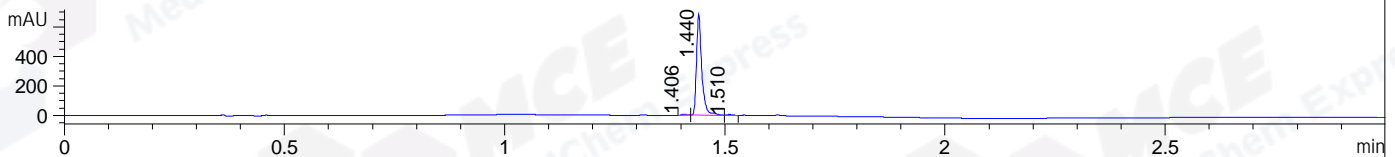
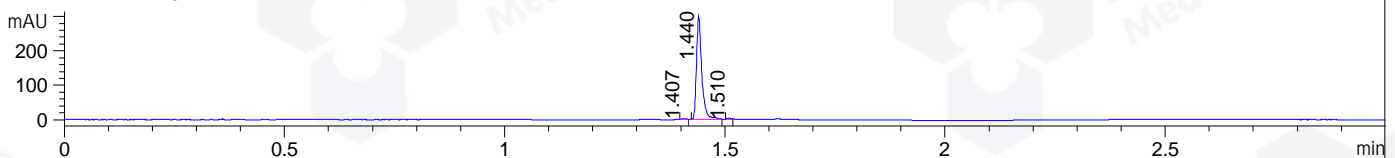


File ..Data\20190107\20190107\XT6202-037-1_6-1-2.D Tgt Mass (CHM):
 Injection Date : 7 Jan 19 2:08 pm +0800 Seq. Line : 66
 Sample Name : XT6202-037-1_6 Location : P1-B-11
 Acq. Operator : SYSTEM Inj : 1
 Spec. Reported : MS Integration Inj Volume : 0.25 ul
 Acq. Method : D:\LCMS03\Data\20190107\20190107\1-POS-3MIN.M
 Analysis Method : D:\LCMS03\Data\20190107\20190107\1-POS-3MIN.M
 Evcvnci"Pq"<"J[/322557"Dcvej%58725
 Method Info : Mobile Phase: A: water(0.01%TFA) B:ACN(0.01%TFA)
 Gradient: 5% to 95%B within 1.3 min
 Flow Rate :1.8ml/min
 Column :SunFire C18, 4.6*50mm,3.5um A-RP-186
 Oven Temperature : 45C

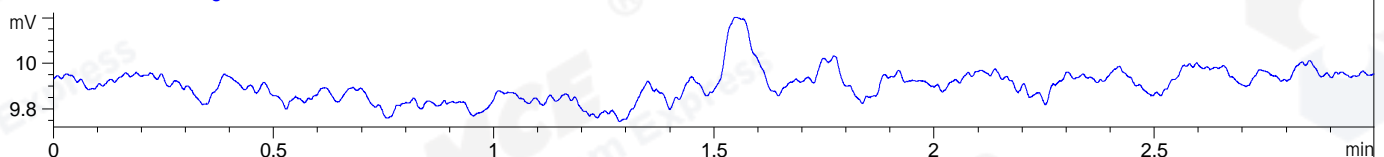
DAD1 A, Sig=214,4 Ref=off



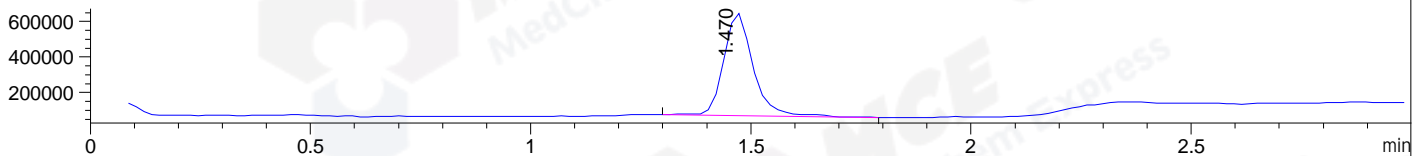
DAD1 B, Sig=254,4 Ref=off



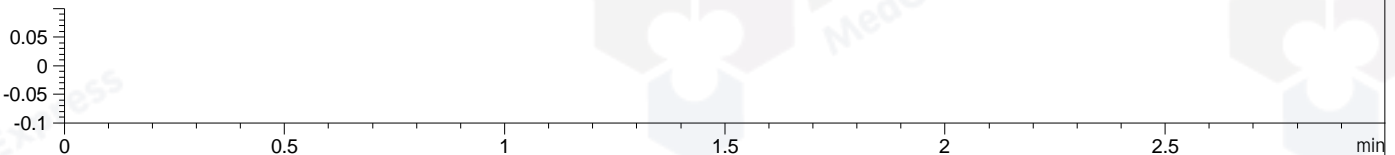
ELS1 A, ELSD Signal



MSD1 TIC, MS File ES-API, Pos, Scan, Frag: 70



Ion 1, MSD1 1, Target Mass 0 +H Positive, EIC=0.7:1.7



Integration Results for DAD1 A, Sig=214,4 Ref=off

RetTim	Width	Area	Height	Area%	MS (+)
1.41	0.01	5.77	7.97	1.00	758
1.44	0.01	568.22	677.52	98.33	429
1.51	0.01	3.90	5.17	0.68	429

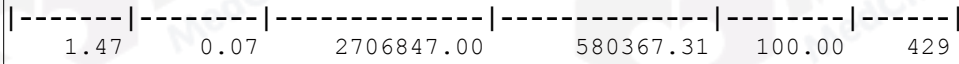
Integration Results for DAD1 B, Sig=254,4 Ref=off

RetTim	Width	Area	Height	Area%	MS (+)
1.41	0.01	1.49	2.25	0.59	758
1.44	0.01	249.01	299.27	98.91	429
1.51	0.01	1.26	2.16	0.50	856

Integration Results for ELS1 A, ELSD Signal

RetTim	Width	Area	Height	Area%	MS (+)
--------	-------	------	--------	-------	--------

Integration Results for MSD1 TIC, MS File



RetTim	Width	Area	Height	Area%	MS(+)
--------	-------	------	--------	-------	-------

Ret. Time: 1.47

<<<< POSITIVE SPECTRA >>>>

